

CRACK IT UP: CURRENT MANAGEMENT OF COMPLEX CORONARY DISEASE

Male, 78 years old

☛ Notable comorbidities:

* bilateral carotid atheromasia with bilateral 50% stenosis

- COPD
- right hemicolectomy for adenocarcinoma of the colon.

☛ Known post- myocardial infarction ischemic heart disease

* 1990, inferolateral acute ST-elevation myocardial infarction (STEMI) treated with thrombolysis

* 2022, detection of inducible ischemia during treadmill test → PTCA+DES of RCA e LAD.

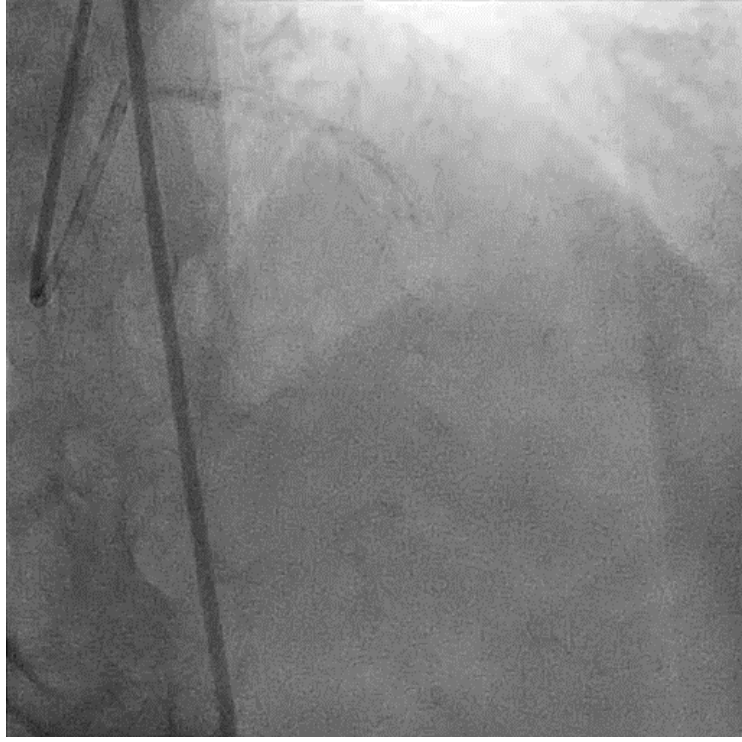
☛ June 2022, onset of worsening dyspnea

→ treadmill test: inducible ischemia for low workloads

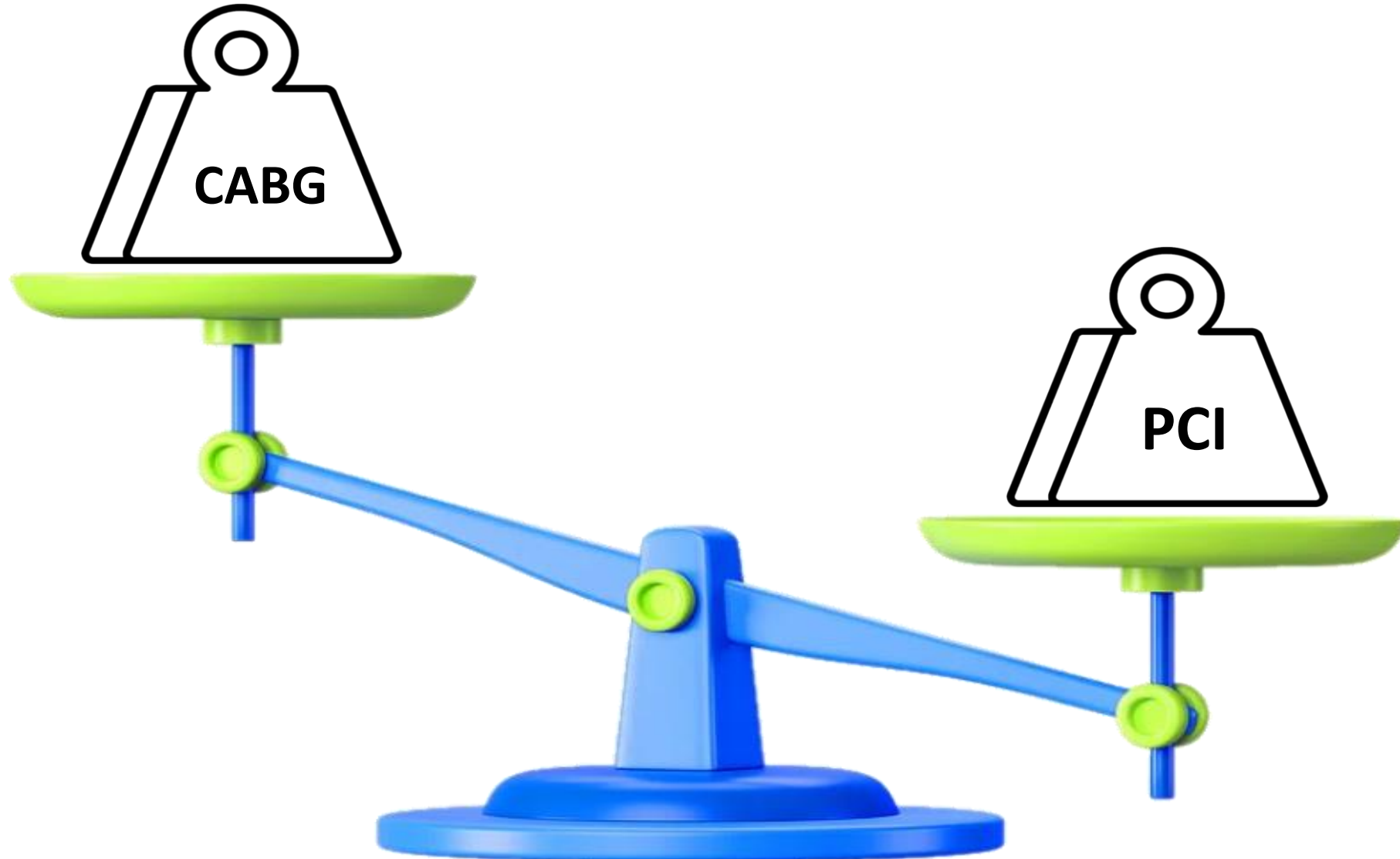
→ coronary angiography



In the cath lab



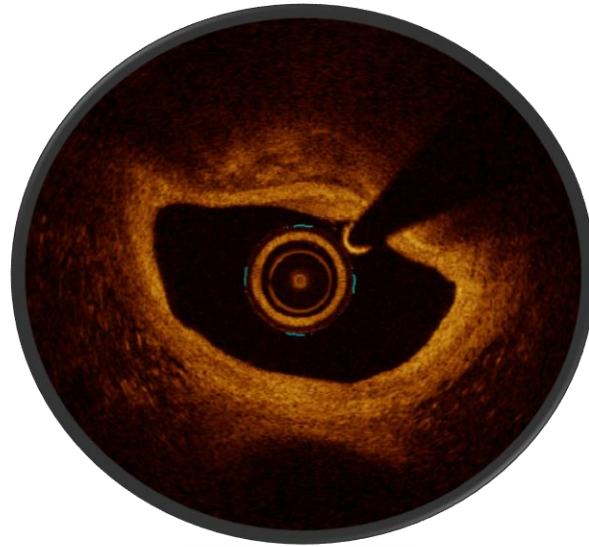
Heart Team: Syntax score 27, STS score 1,7%, Euroscore II 2,27%, RCA's distal segment disease, COPD with moderate ventilatory deficit



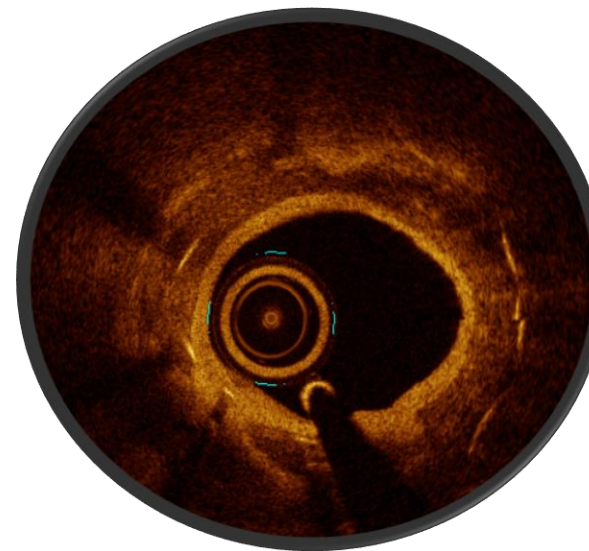
OCT-GUIDED PROCEDURE



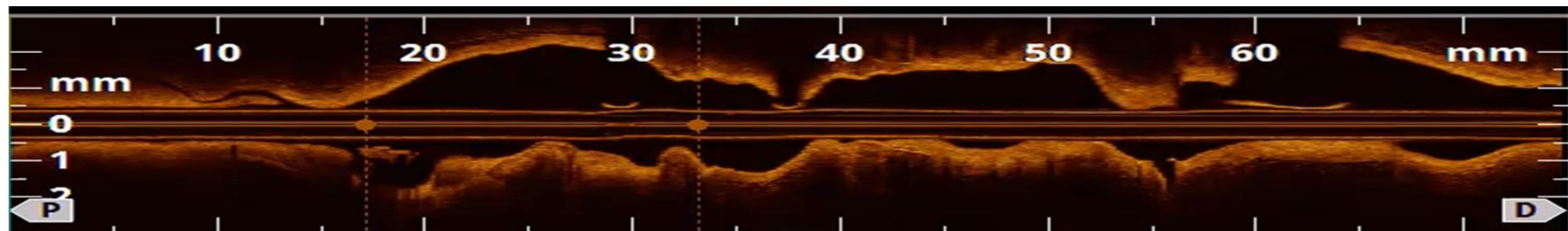
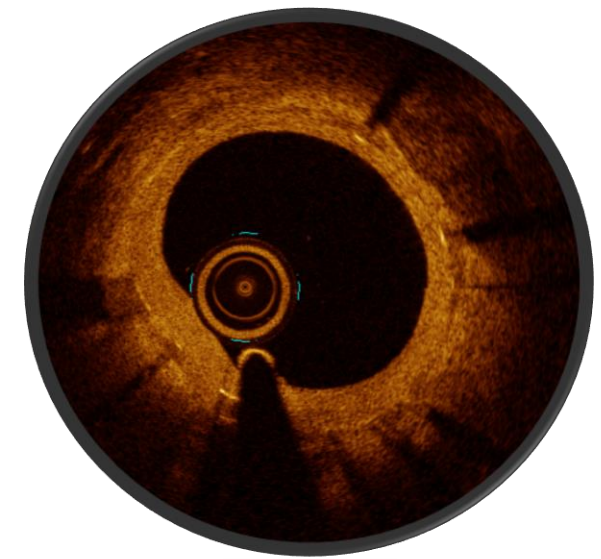
DEEP CALCIUM



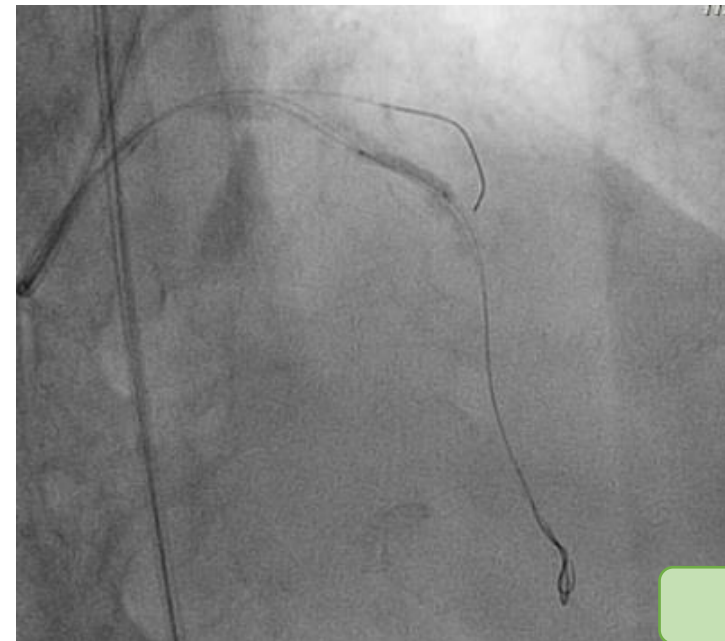
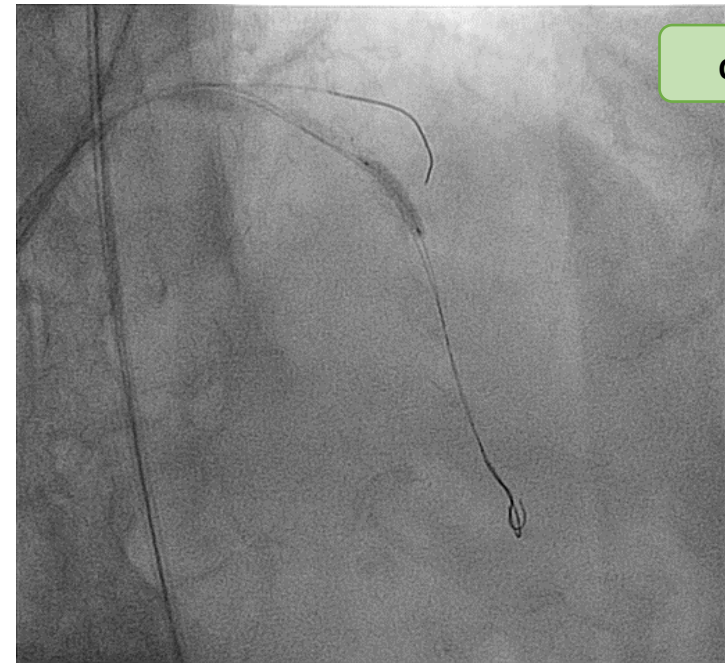
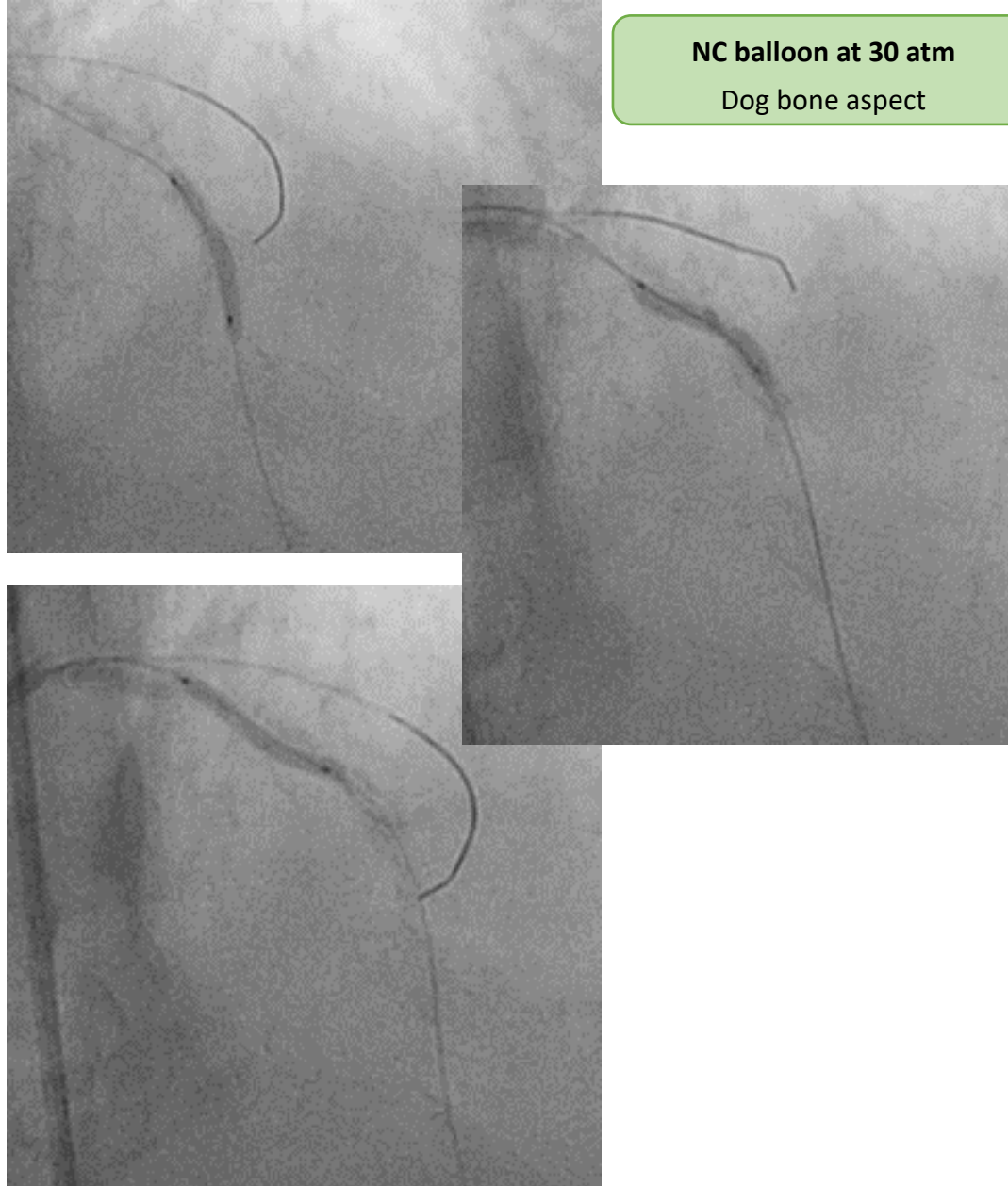
CIRCUMFERENTIAL
CALCIUM



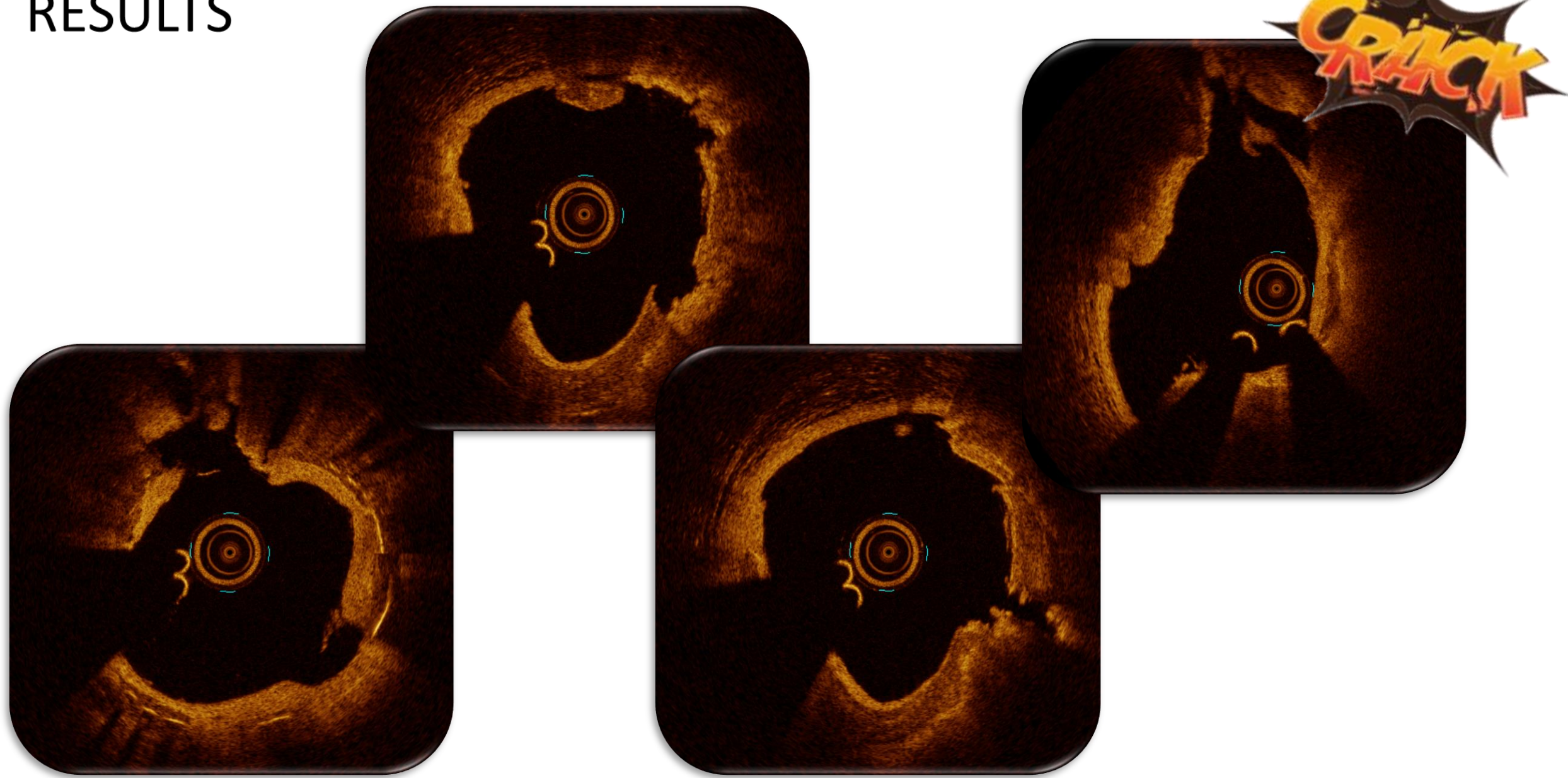
ISR NEOATHEROSCLEROSIS + CALCIUM

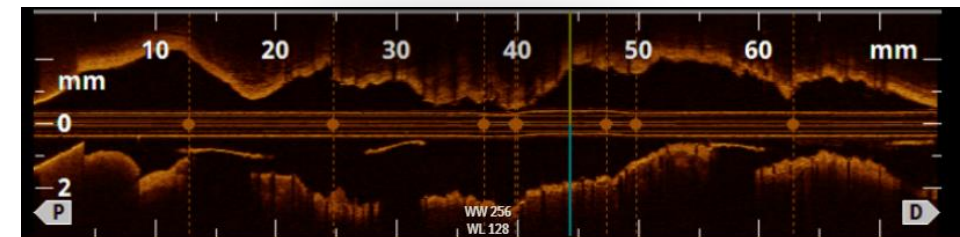
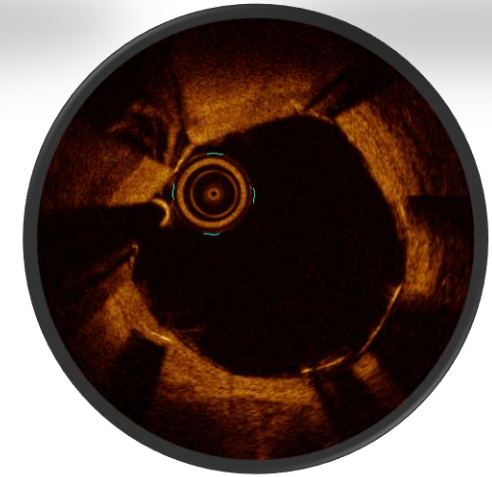
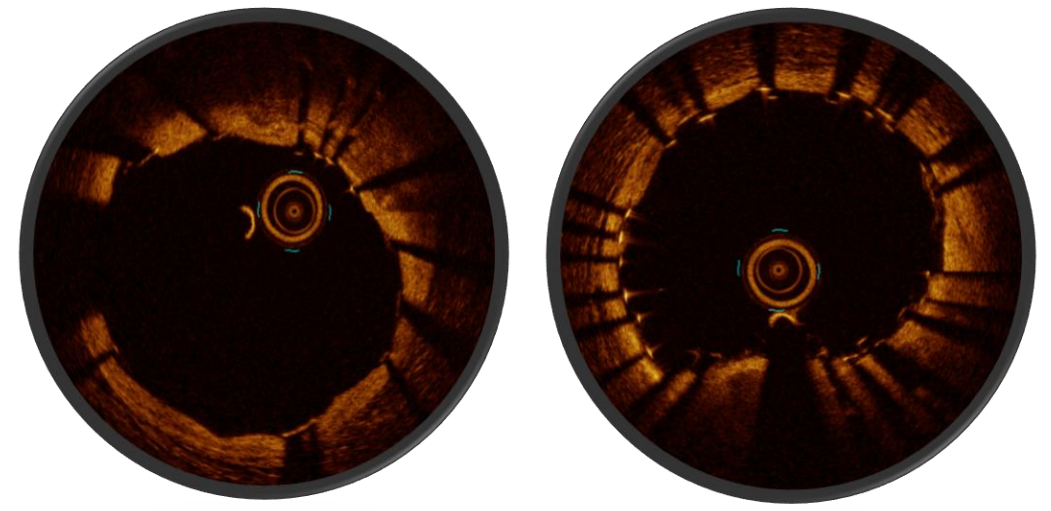
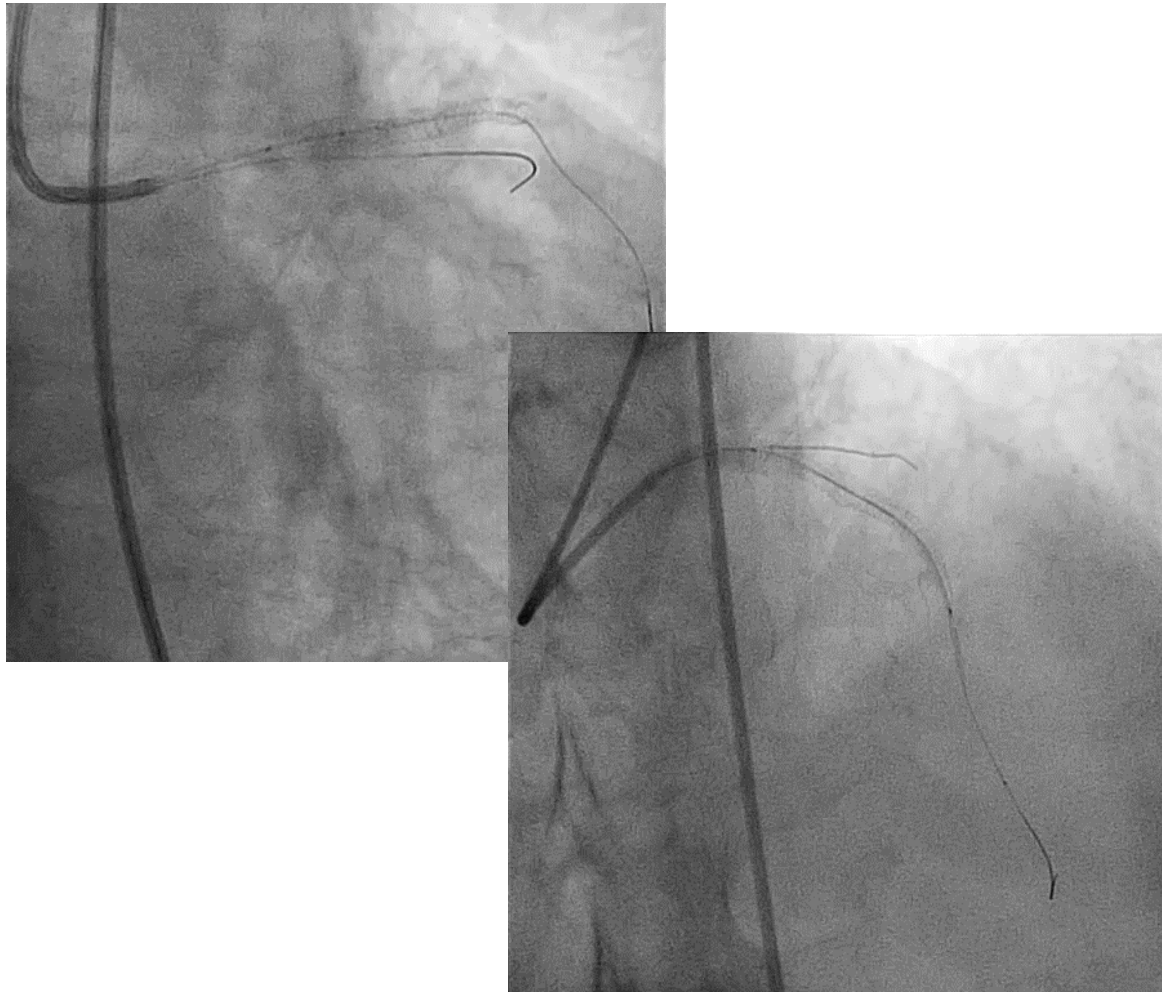


LAD: mid-segment



RESULTS





DES placement

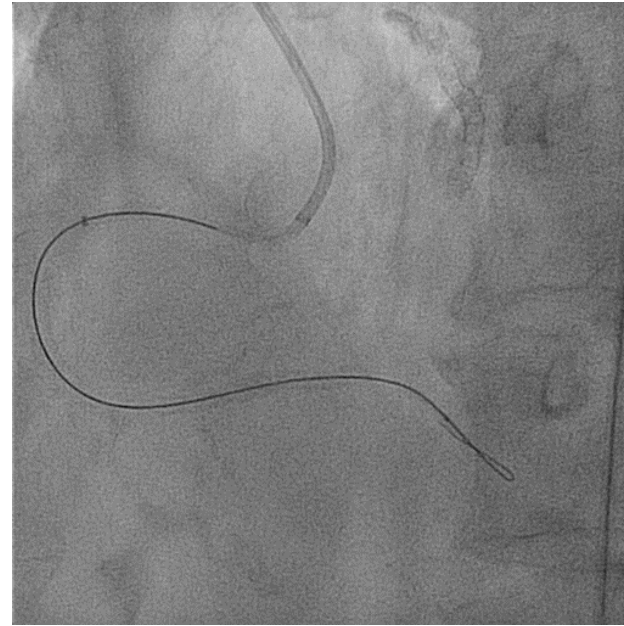
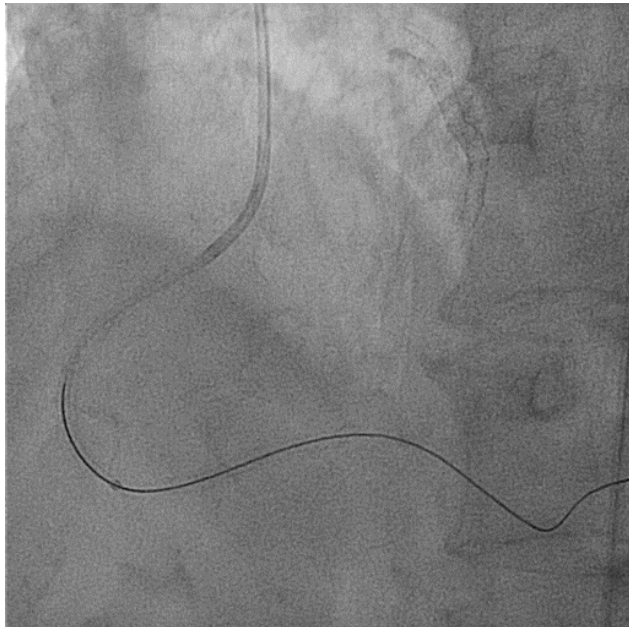
- Xience 3x 28 (mid segment)
- Xience 4x8 mm (prox segment)
- + Post-dilatation with NC balloon

RCA

Uncrossable
DP stenosis
with
workhorse
wire ->
Fielder XT-A



2.0 balloon



Uncrossable DP
stenosis with
microcatheter ->
guideliner + 1,5
balloon also for
distal anchoring
for guideliner
advancement



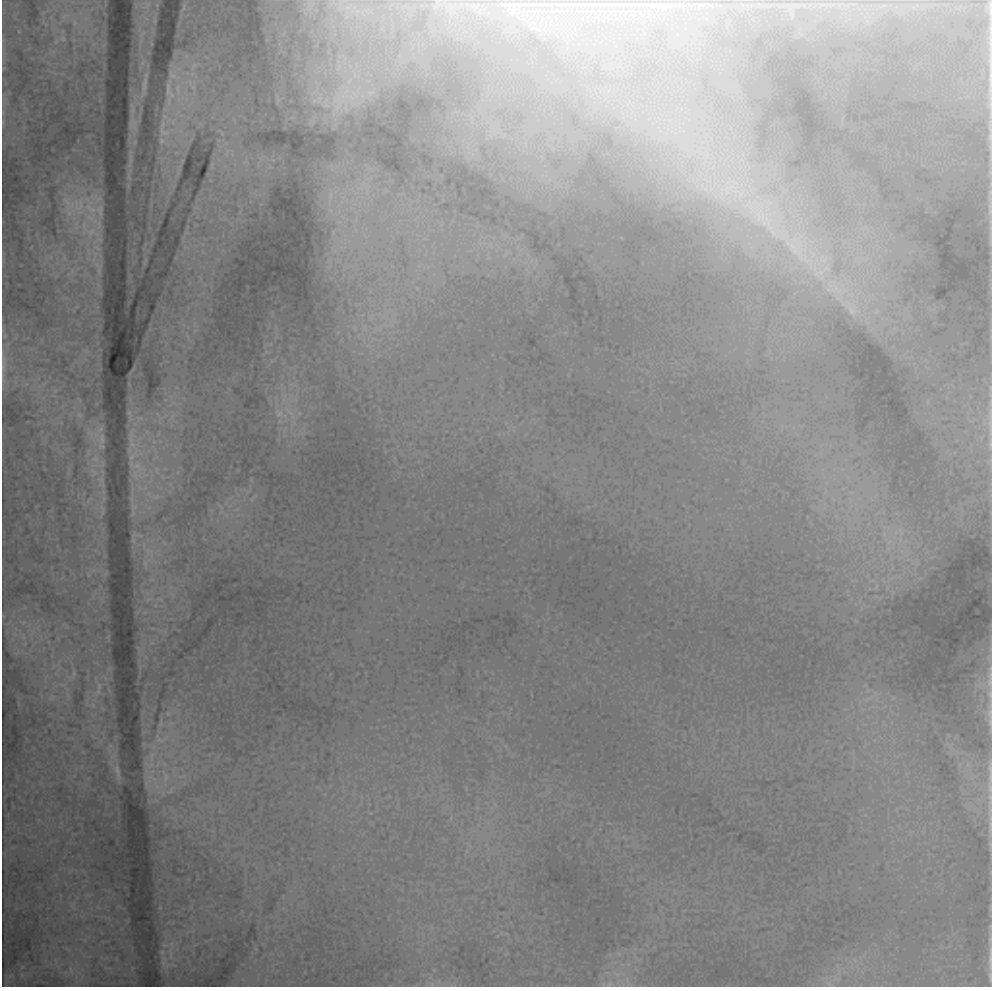
Finewire can
cross the lesion
and wire change
with a
workhorse wire

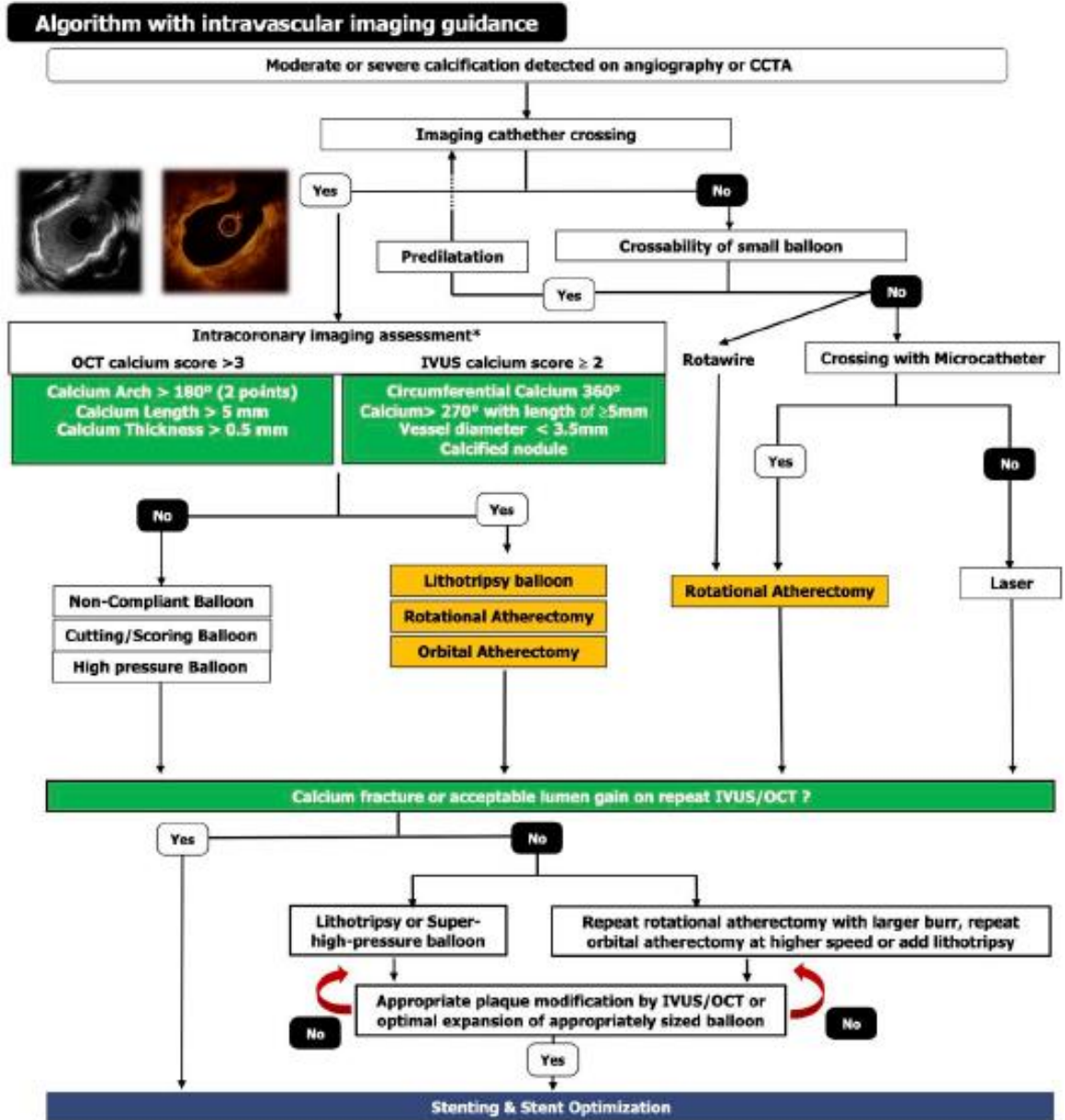
RCA RESULTS



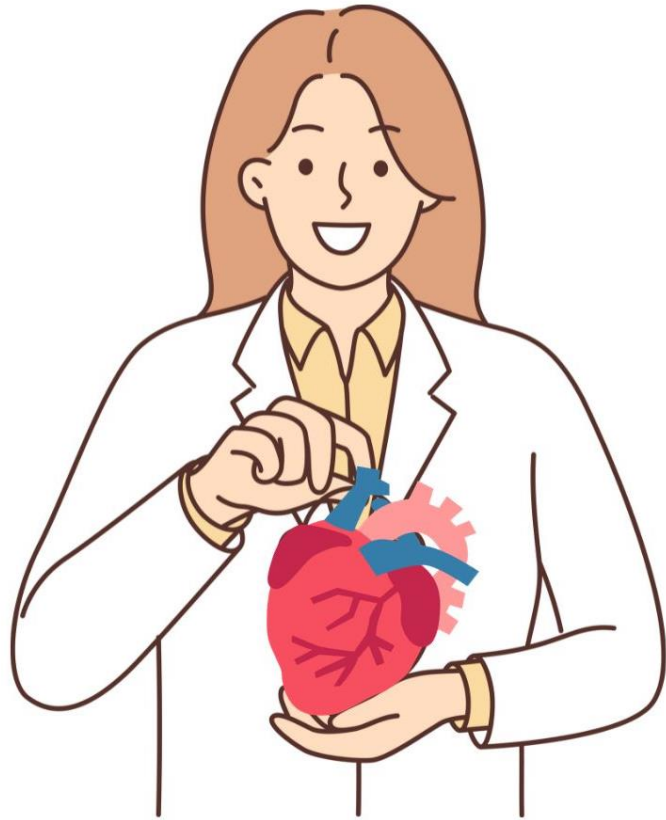
Xience 2,5x33

One-Year Follow Up





CONCLUSION



THANK YOU FOR LISTENING