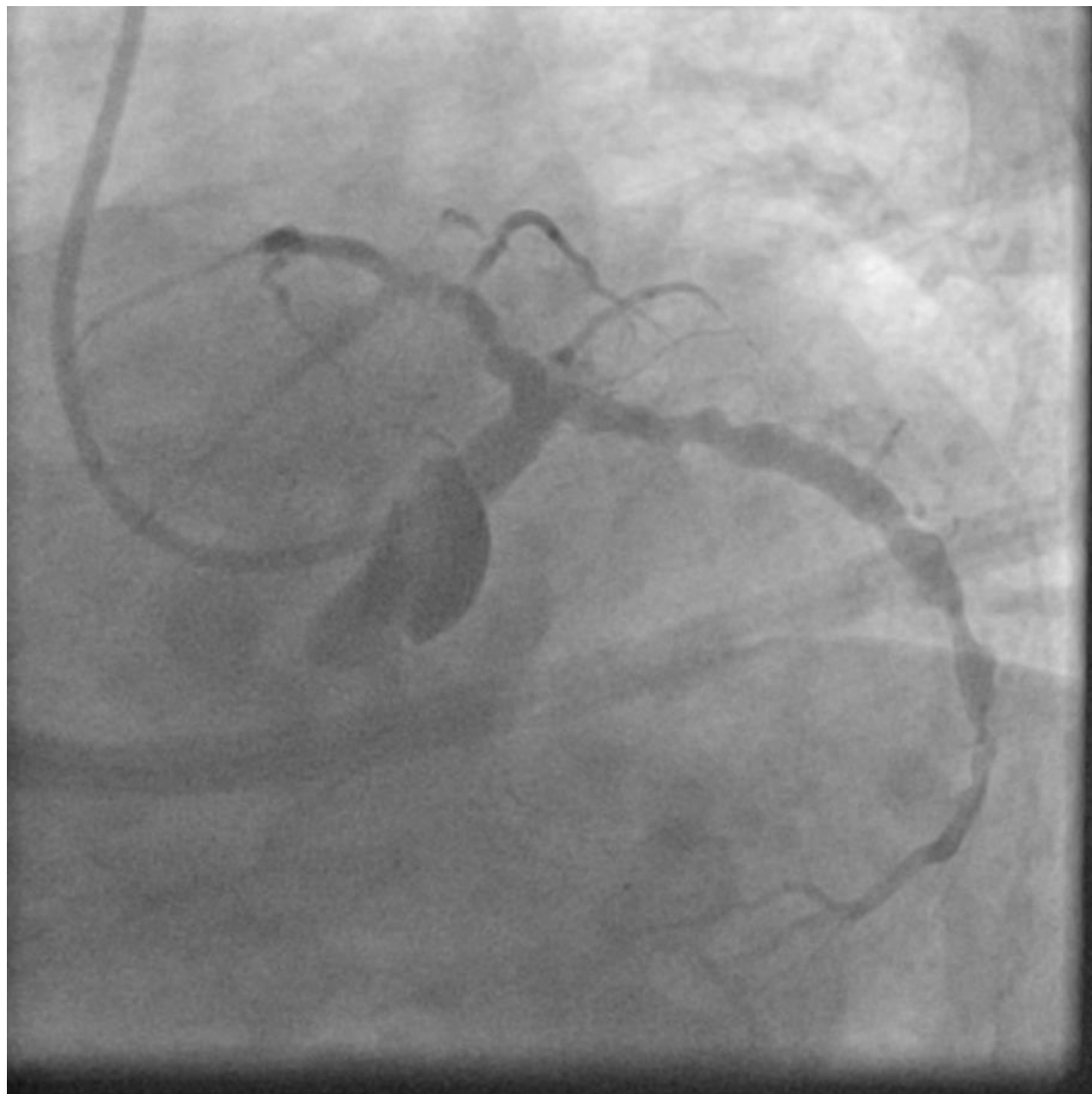
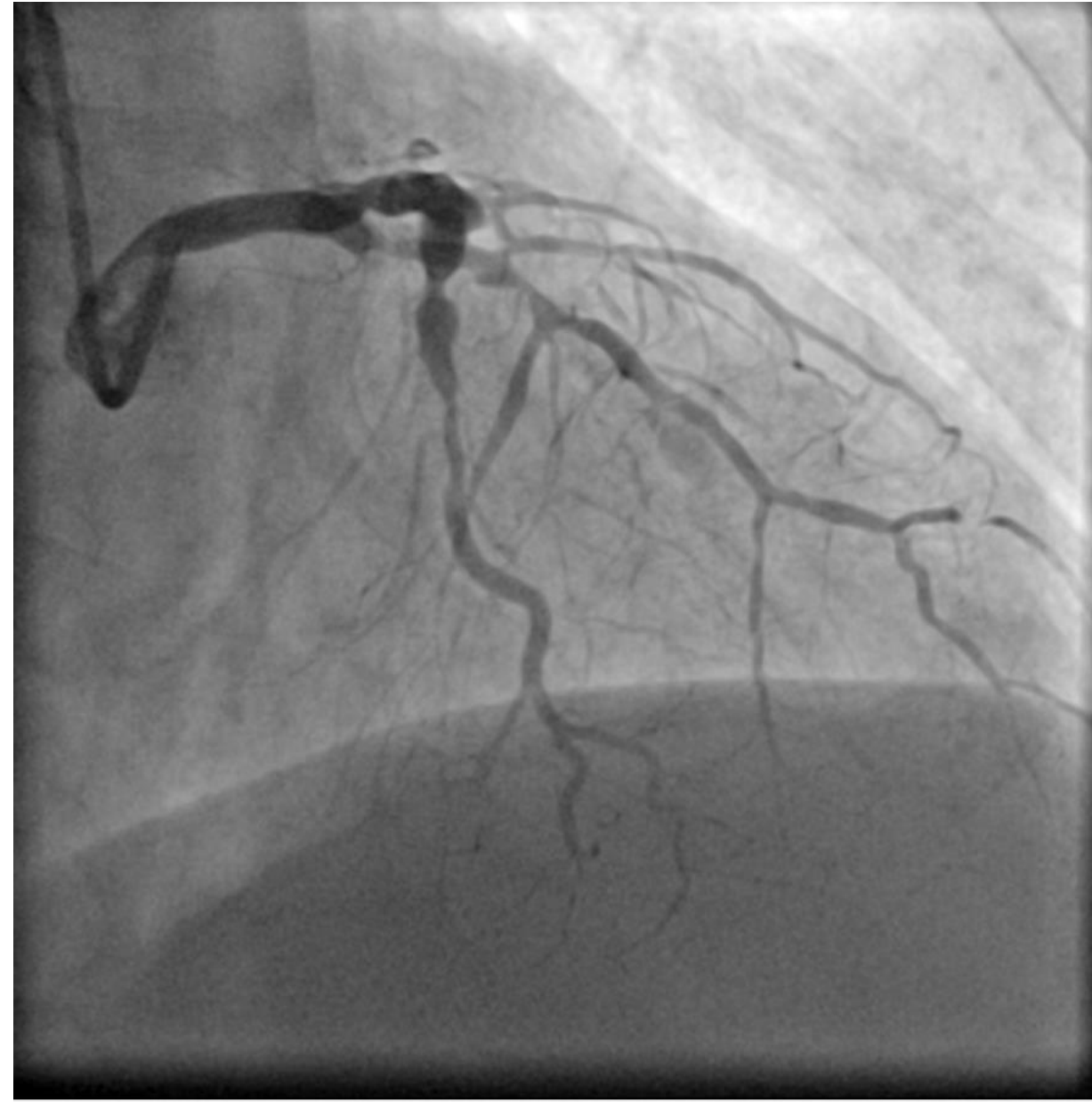


- 69 YO man
- Hypertension, smoker, overweight
- Chest pain and heart failure. EF 35%.
- After stabilization of the heart failure -> coronary angiography

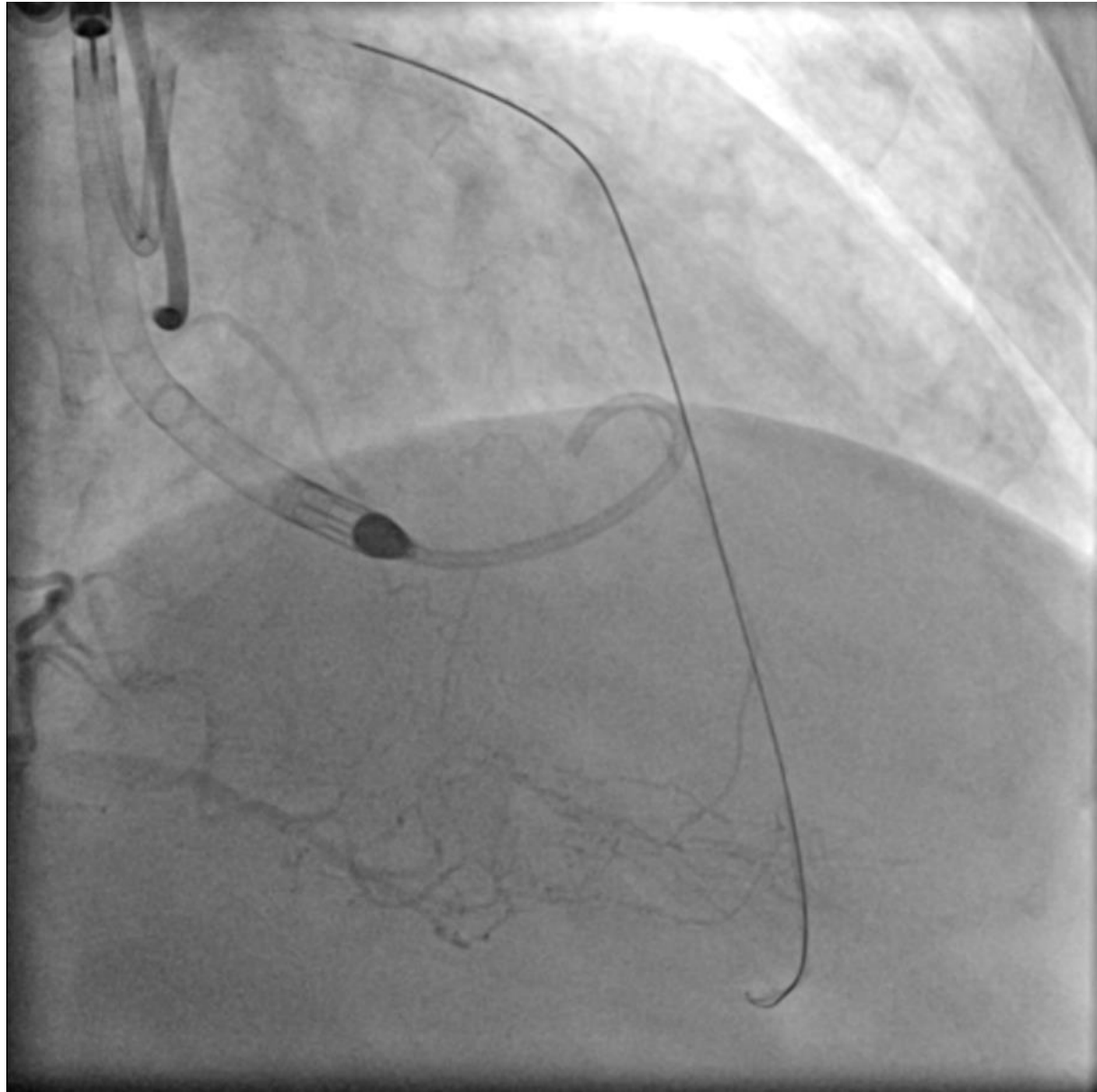
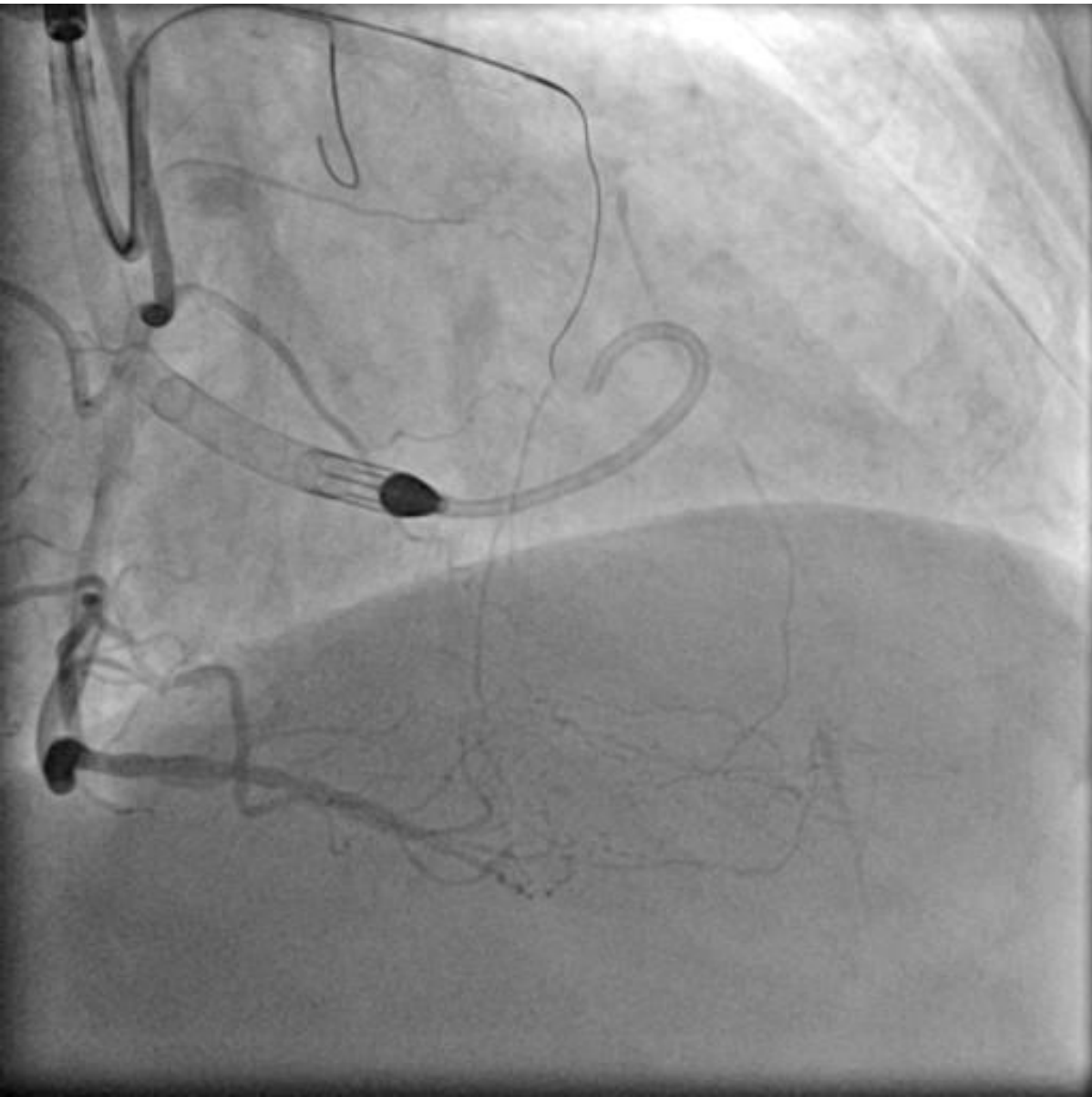


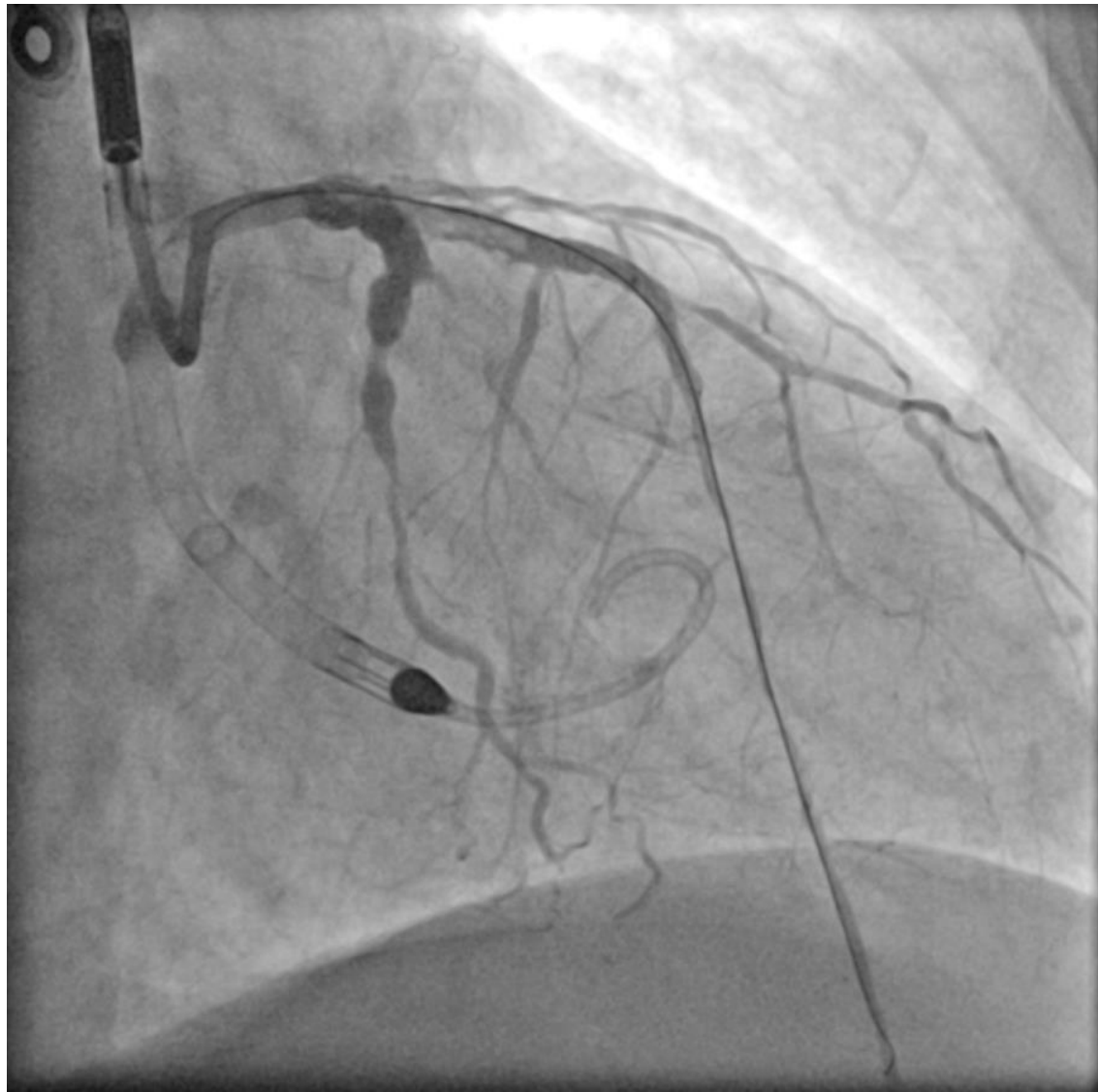
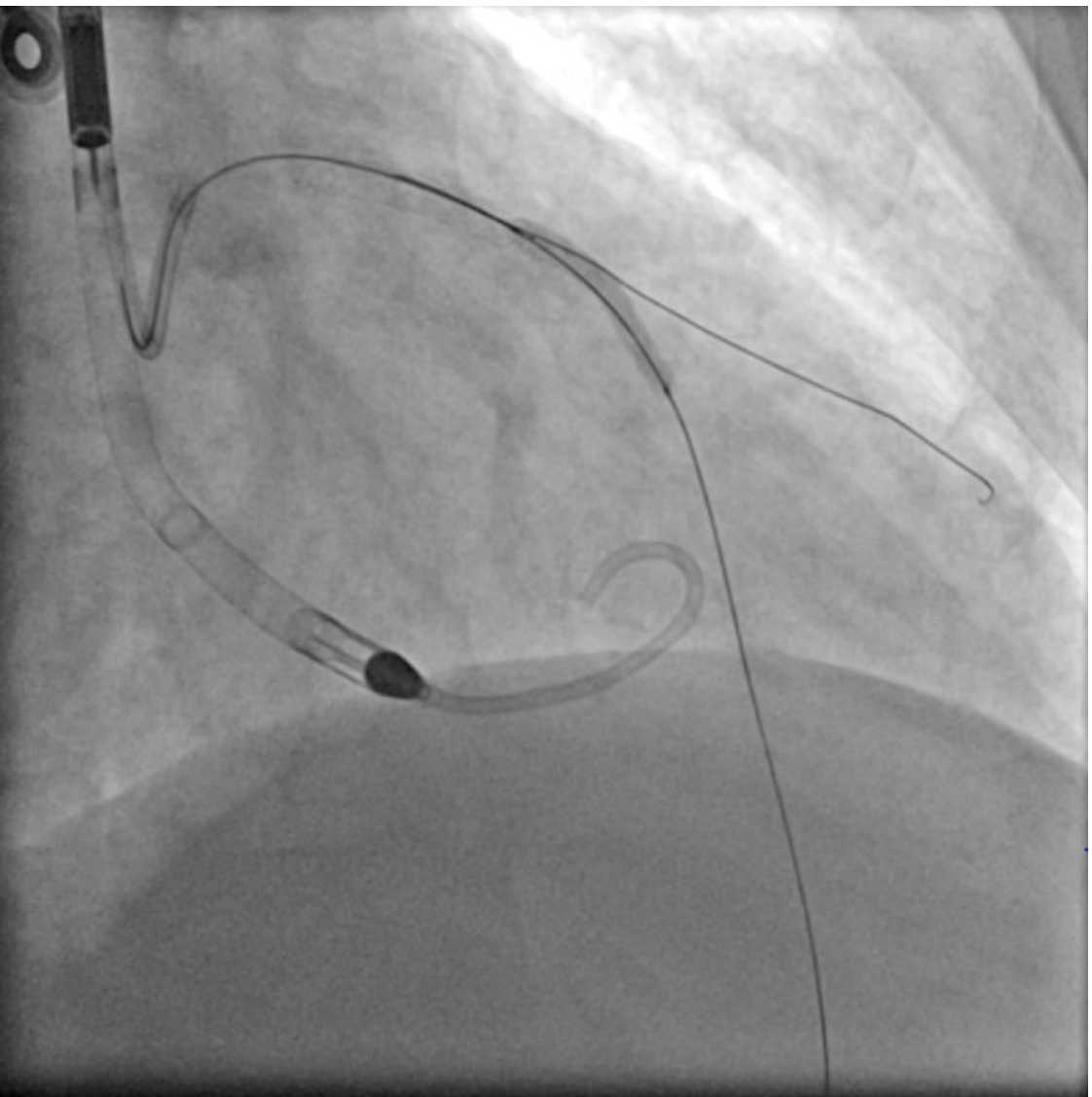


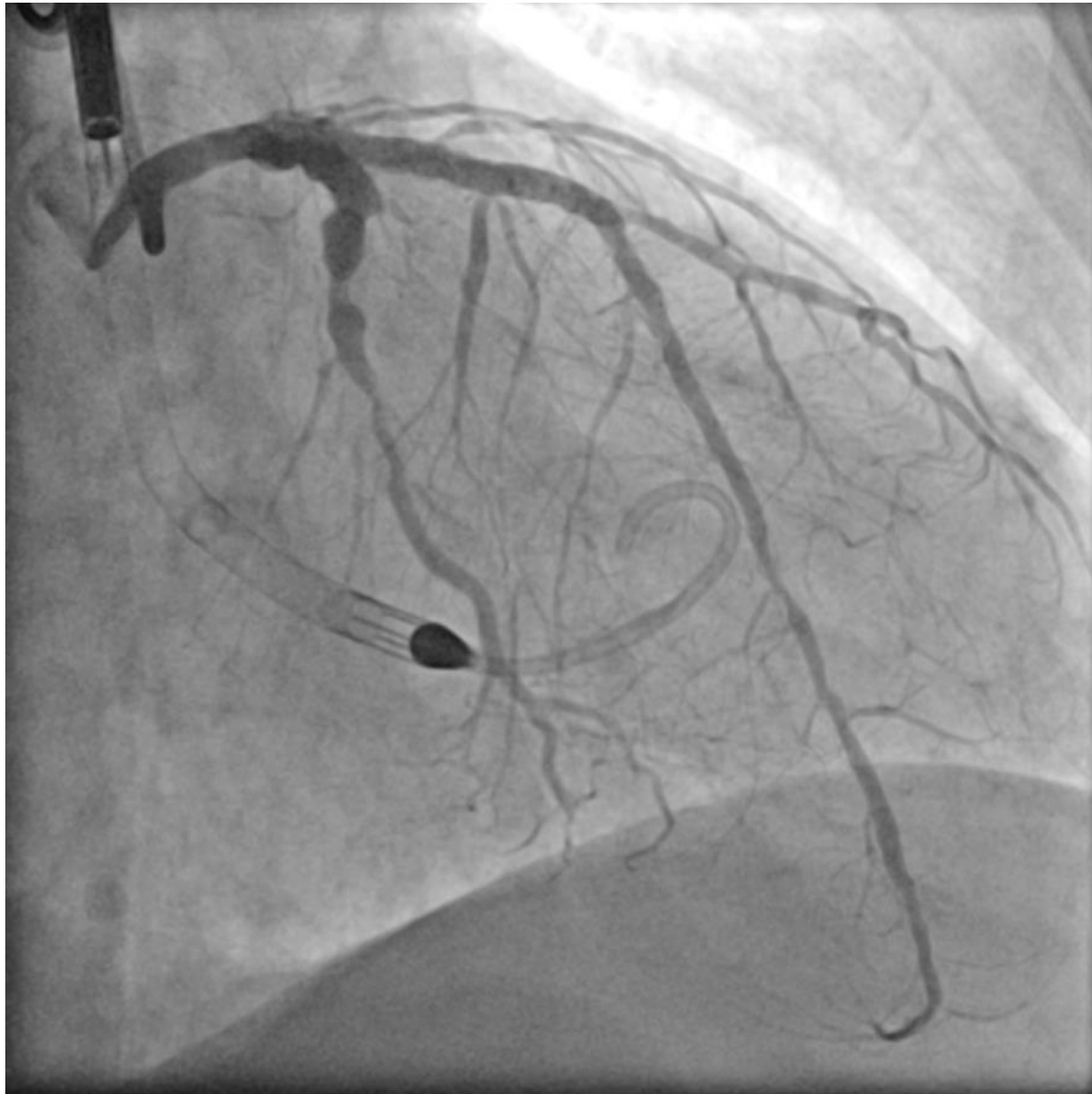
- CTO of LAD in a diffusely critical disease. Critical stenosis of CX.
- Amultiple attempts to cross LAD was performed with BMW, Sion, Sion blue, Sion Black, Fielder XT-A, Gaia 1 with Finecross Microcatheter with no success
- For instabilization of the patient, a second procedure with Impella was programmed.



After multiple attempt crossed with Gaia
second and teleport

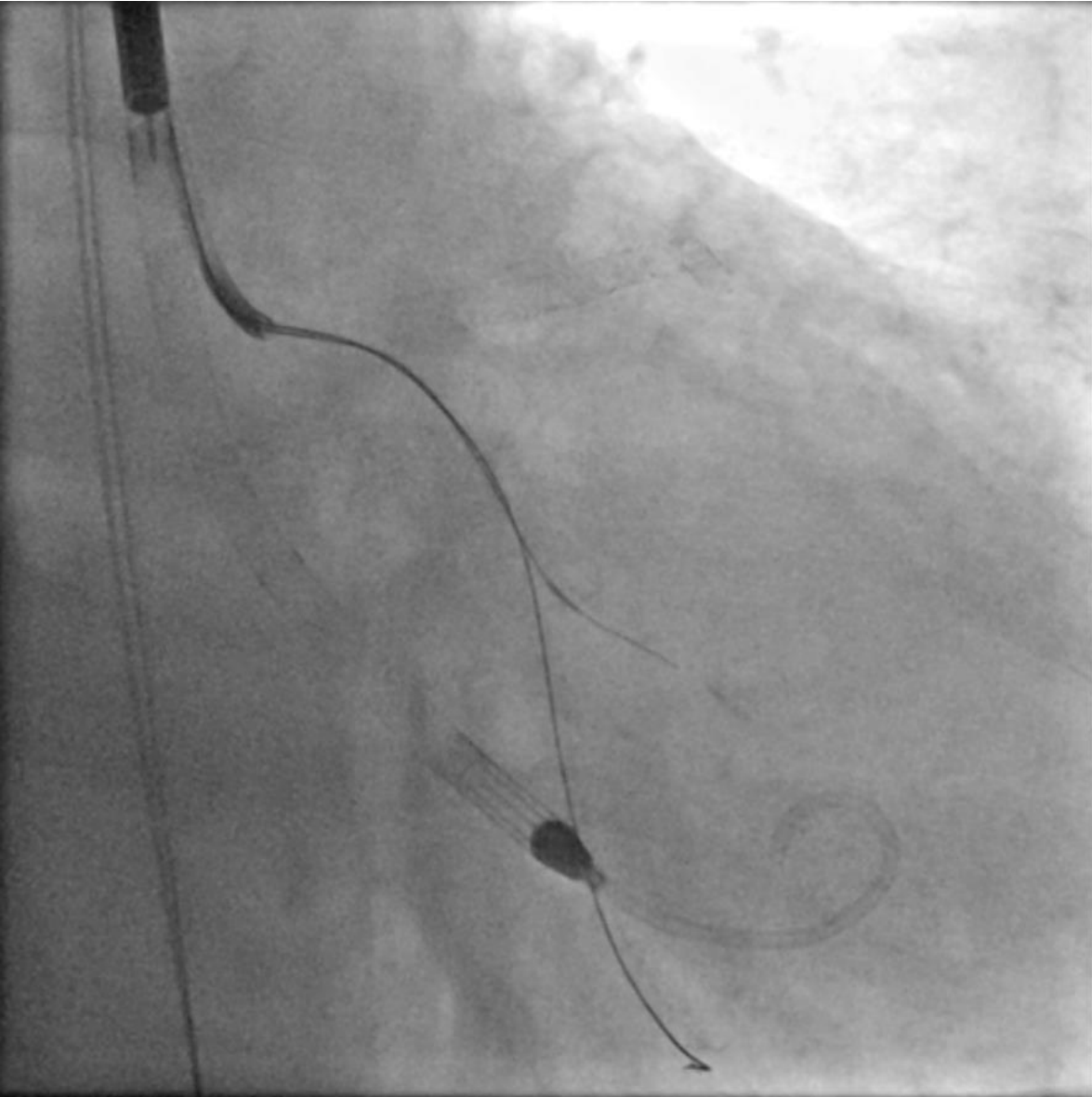




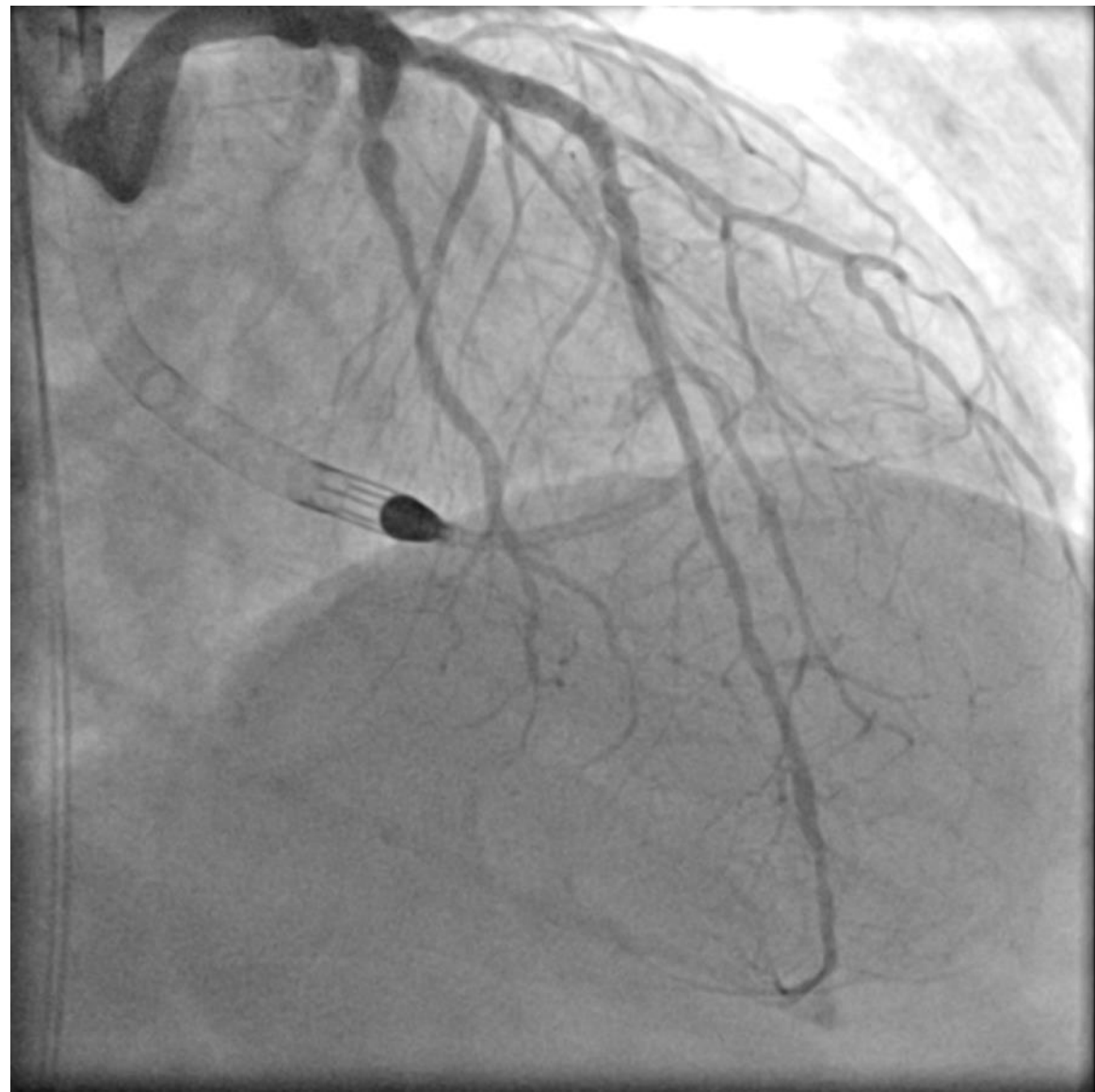


After stenting of LAD with Cre8
evo 3 x 26 mm and
postdilatation with NC 3,5 mm

After multiple attempt crossed MO with
Gladius EX and Teleport



Angioplasty with DCB on MO



Impella access closed with MANTA



Take Home Messages

- CTOs should be approached in stable conditions
- If the patient is a CHIP patient with severely reduced EF, the CTO should be performed with mechanical support.
- The mechanical support is critical even in keeping stable the patient in case of complications.
- If the patient is stable after the procedure, the mechanical support can be removed.