

OFF THE BEATEN TRACK...

A clinical case of percutaneous coronary intervention of gastroepiploic artery graft

Paolo DESARIO

Interventional Cardiology
San Paolo Hospital
Bari, Puglia

CLINICAL HISTORY

T.M. a 73 year-old male

Risk factors: Hypertension, type 2 diabetes, dyslipidemia, former smoker

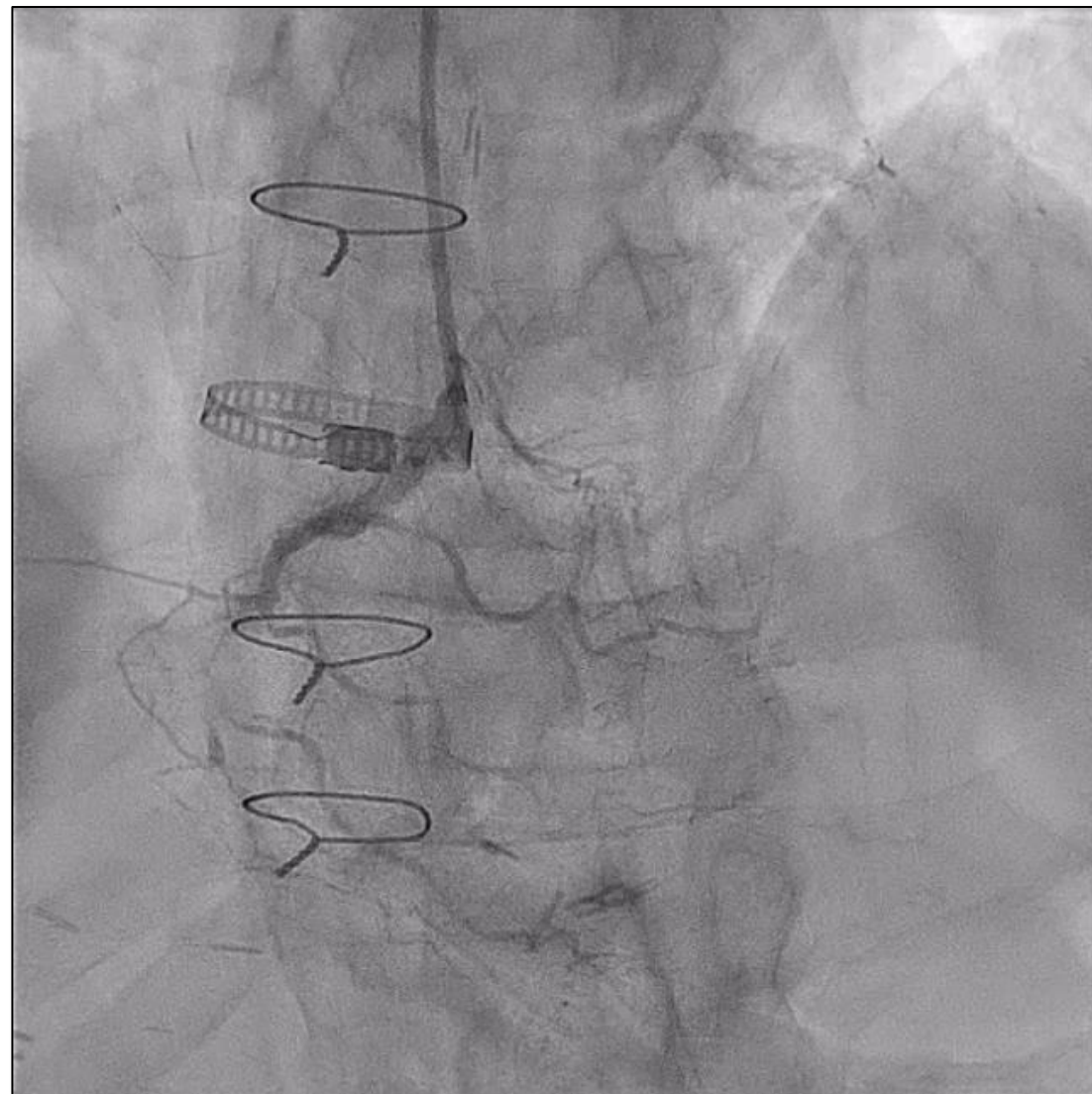
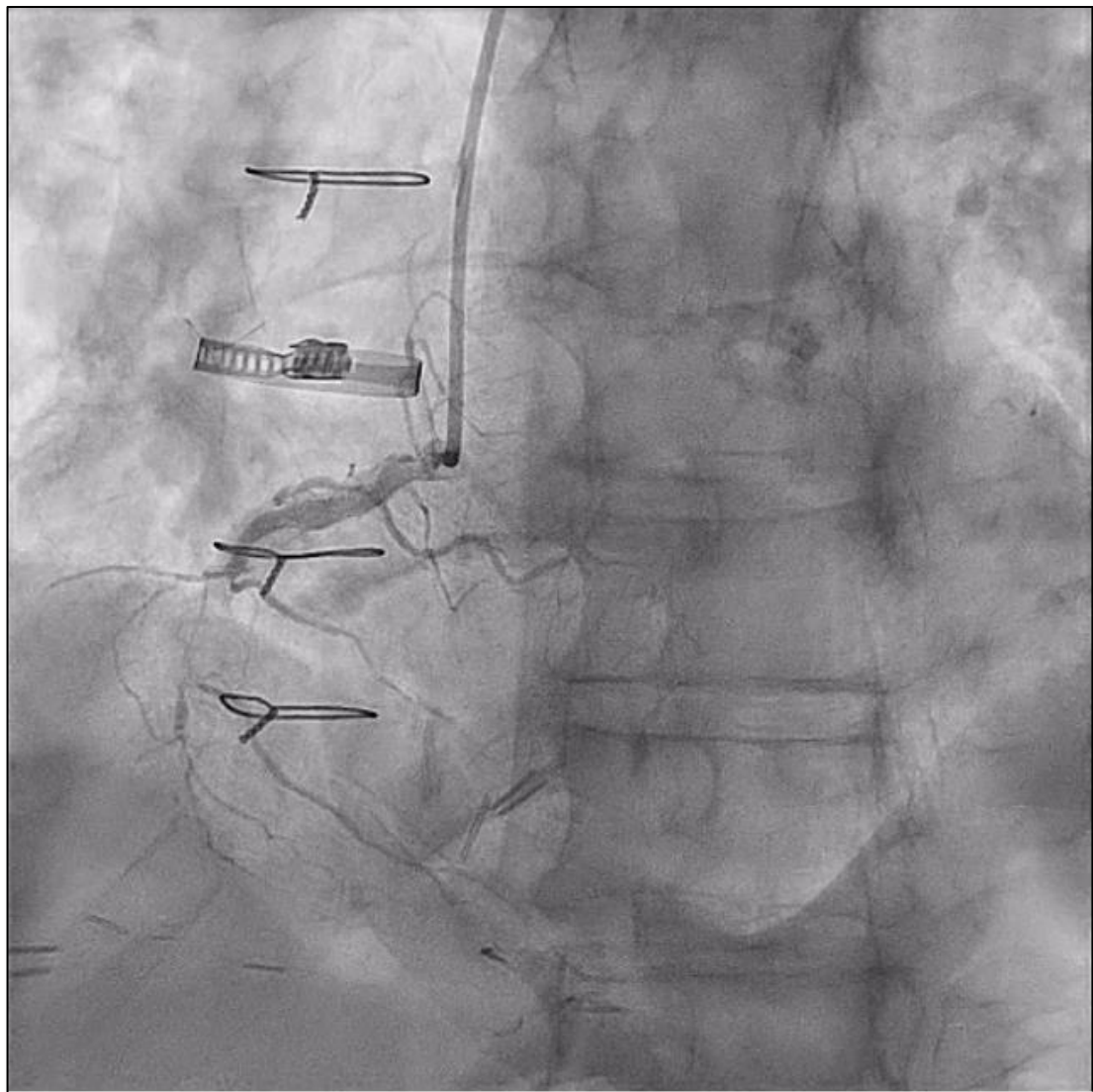
Comorbidities:

- Severe systolic dysfunction (LVEF 38%);
- AICD carrier;
- Permanent atrial fibrillation;
- Lower extremities peripheral artery disease (PTA and stenting of right SFA);
- Chronic obstructive pulmonary disease
- Chronic kidney disease

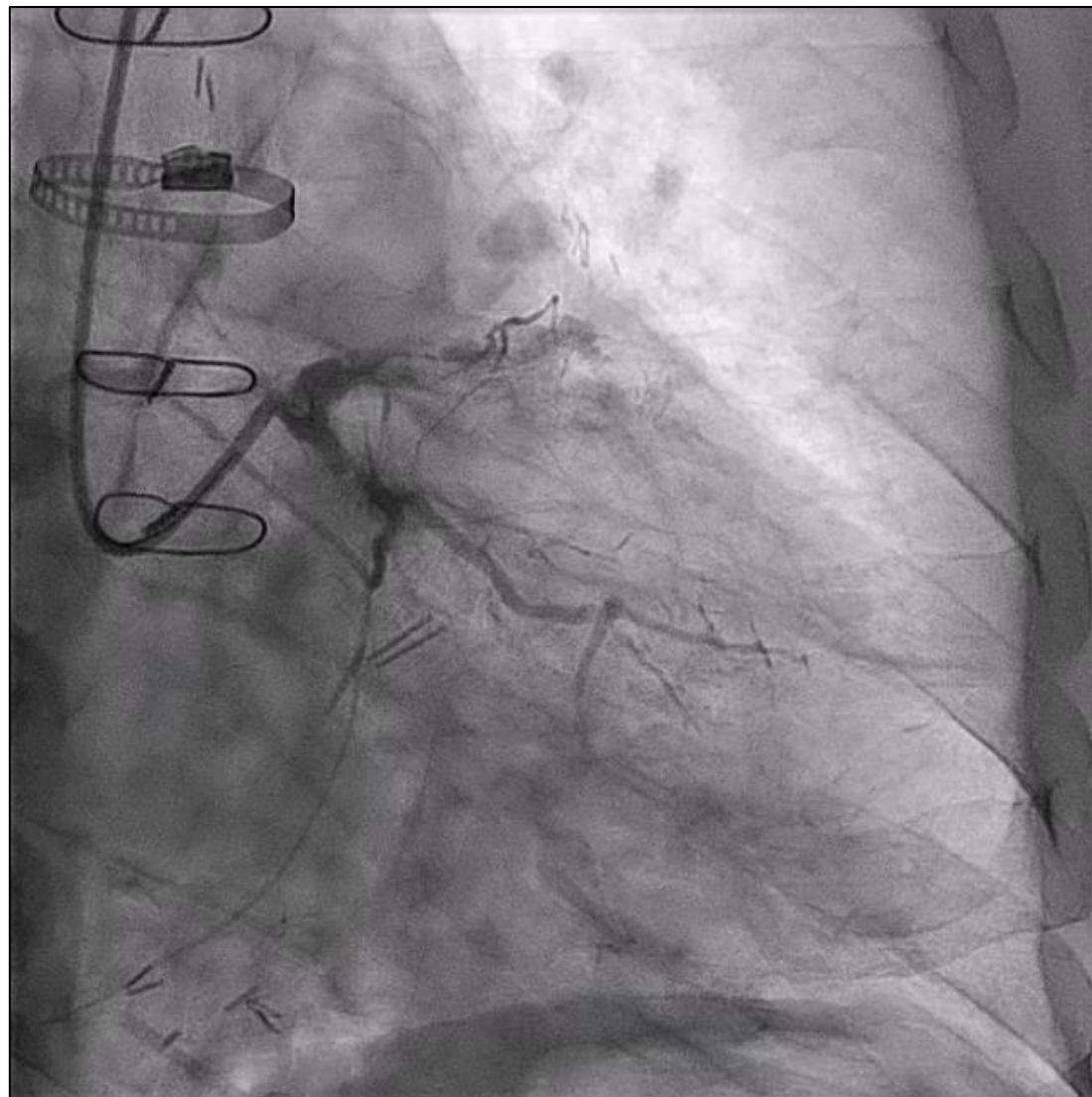
Cardiovascular History:

- **Jun 1995, AMI:** L-IMA to LAD, sequential R-IMA to OM1-OM2-OM3 and gastroepiploic artery (GEA) to PDA.
- **Dec 2020, NSTEMI** complicated by acute pulmonary oedema: PCI/DES of LCX-OM1 (lack of documentation)
- **Jul 2021, NSTEMI:** severe multivessel CAD not amenable to revascularization (RIMA occluded, GEA not mentioned)
- **Jan 2023, AHF:** first admission in our hospital. AHF stabilization and coronary angiography

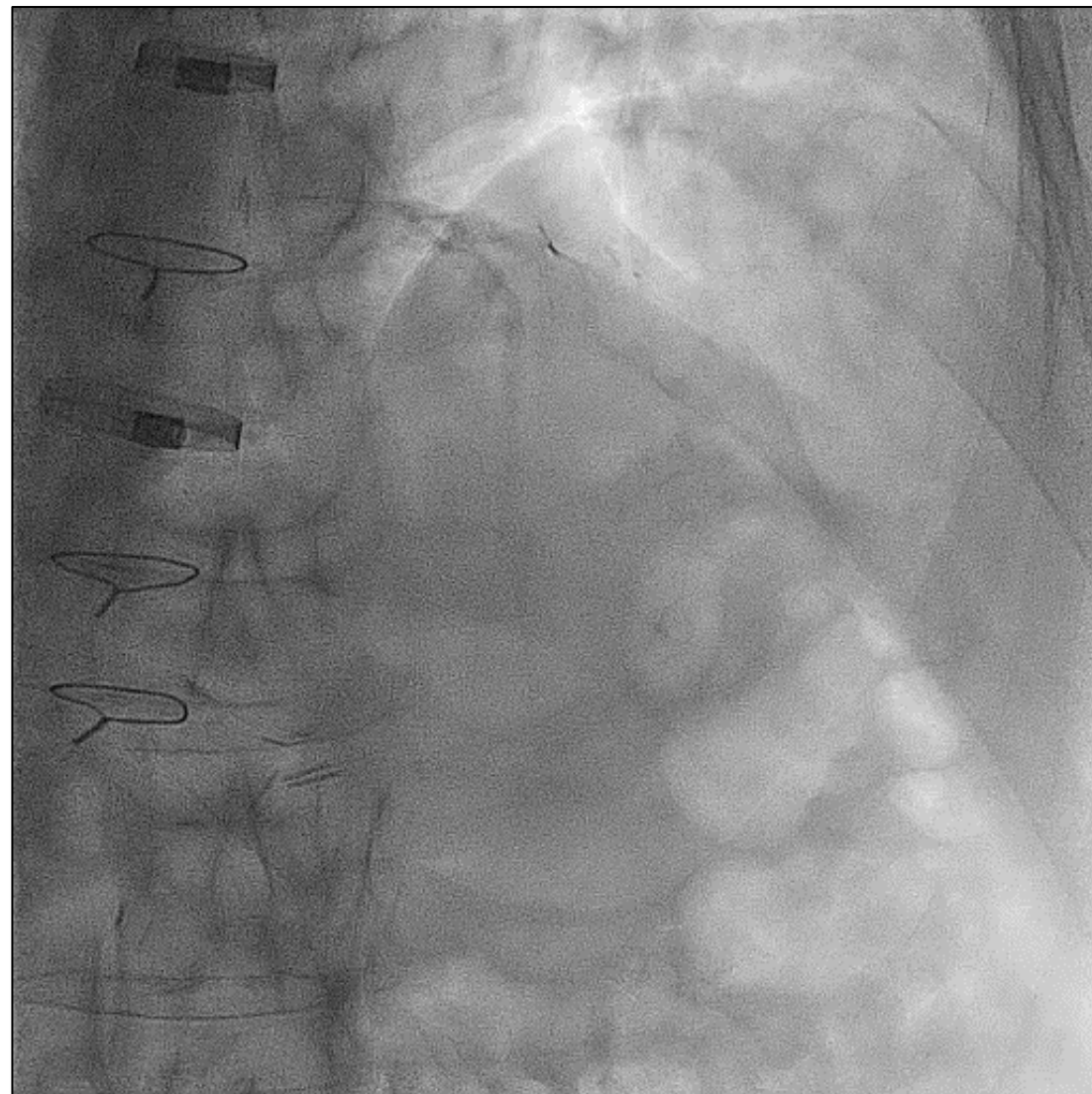
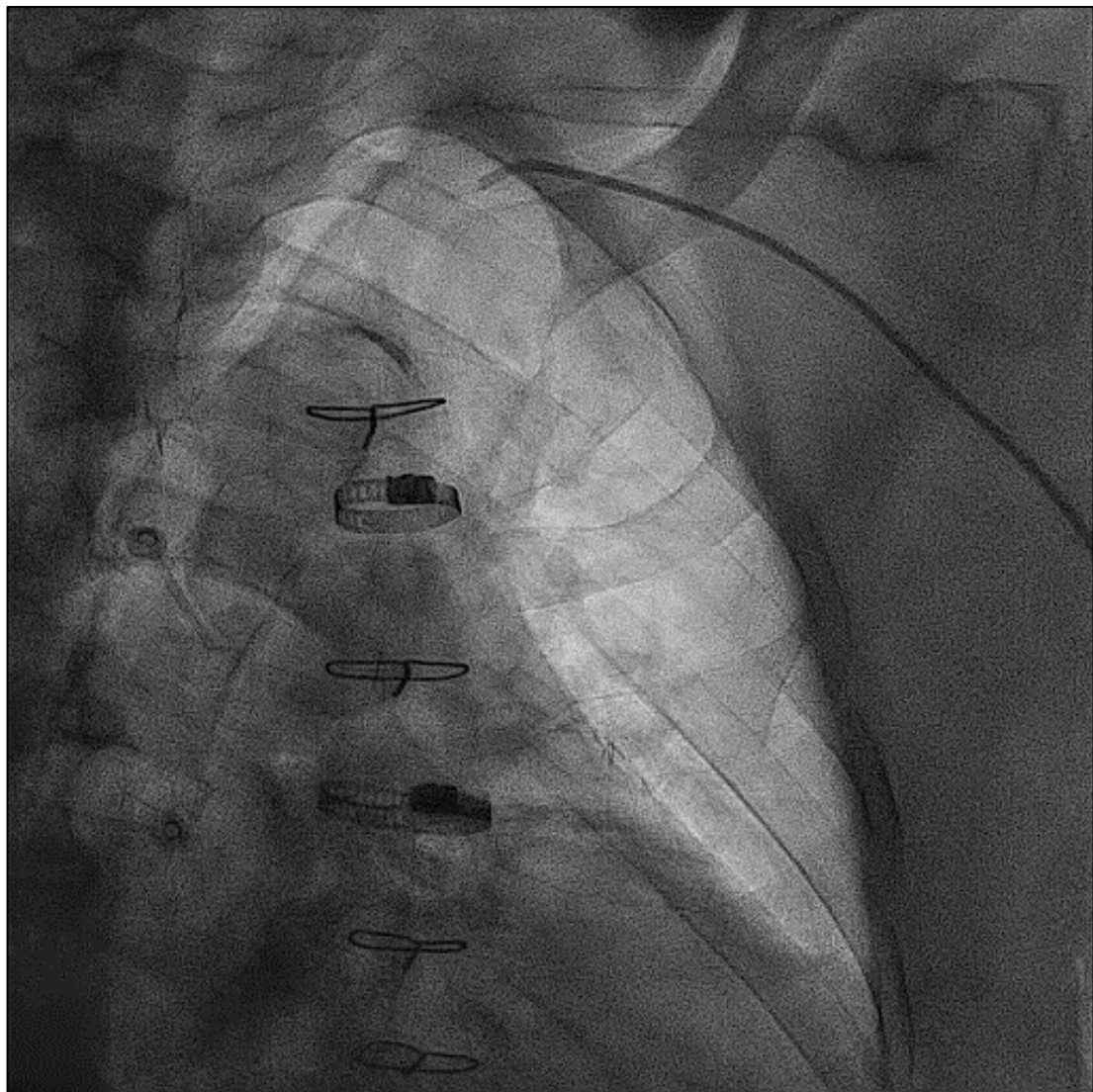
DIAGNOSTIC STUDY: Right coronary artery



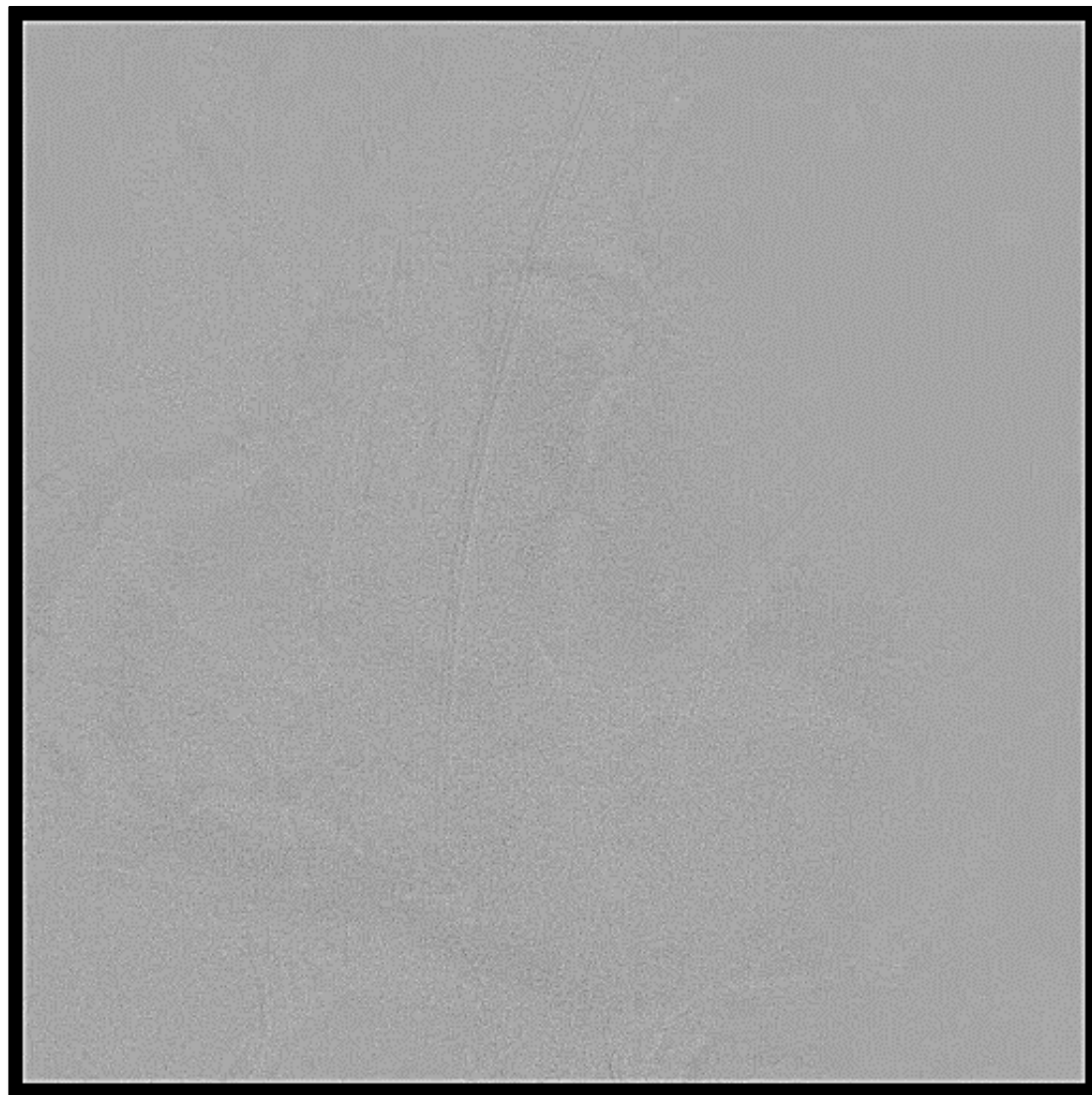
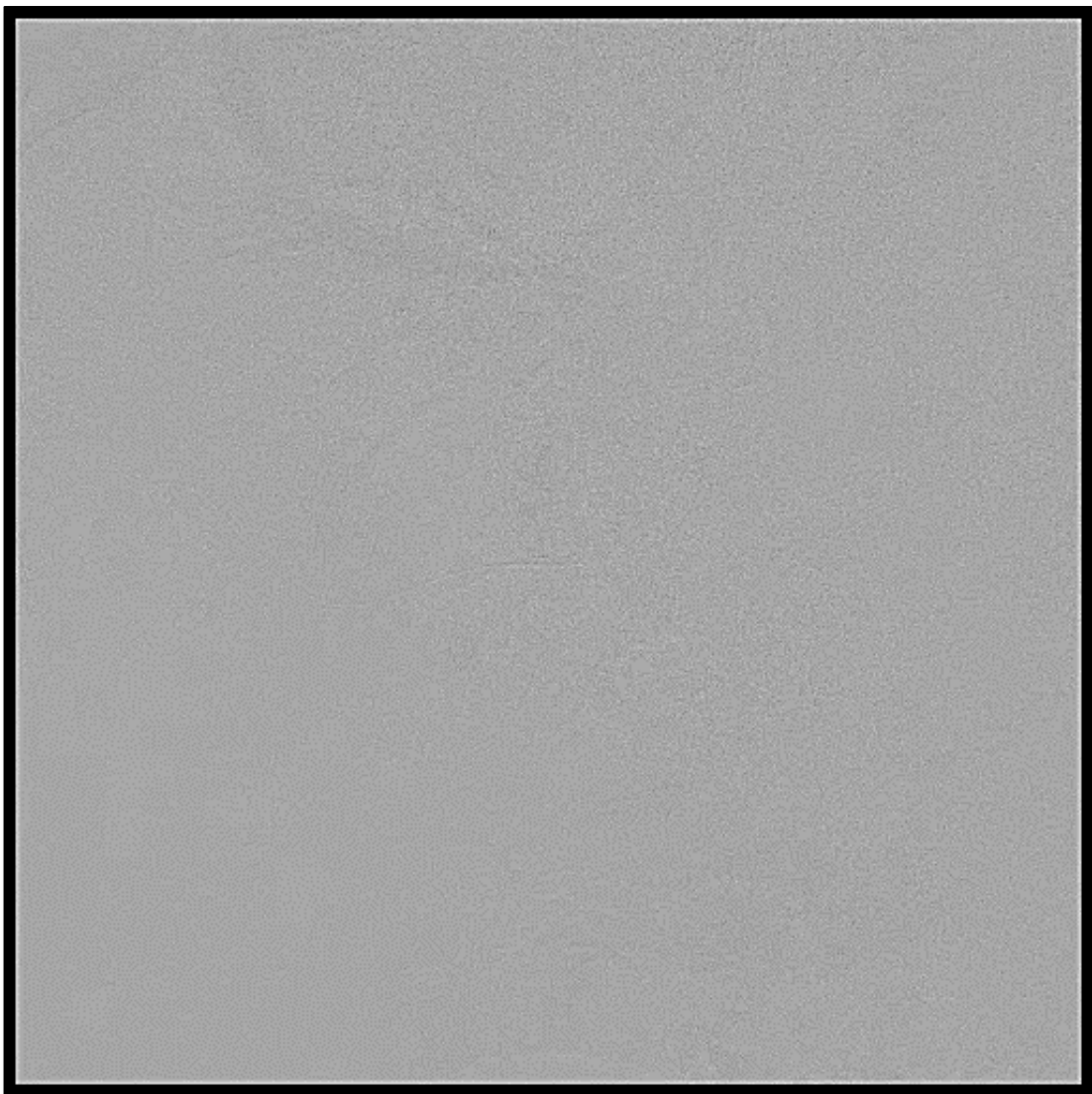
DIAGNOSTIC STUDY: Left coronary artery



DIAGNOSTIC STUDY: Coronary artery bypass graft (1)



DIAGNOSTIC STUDY: Coronary artery bypass graft (2)



REVASCULARIZATION STRATEGY

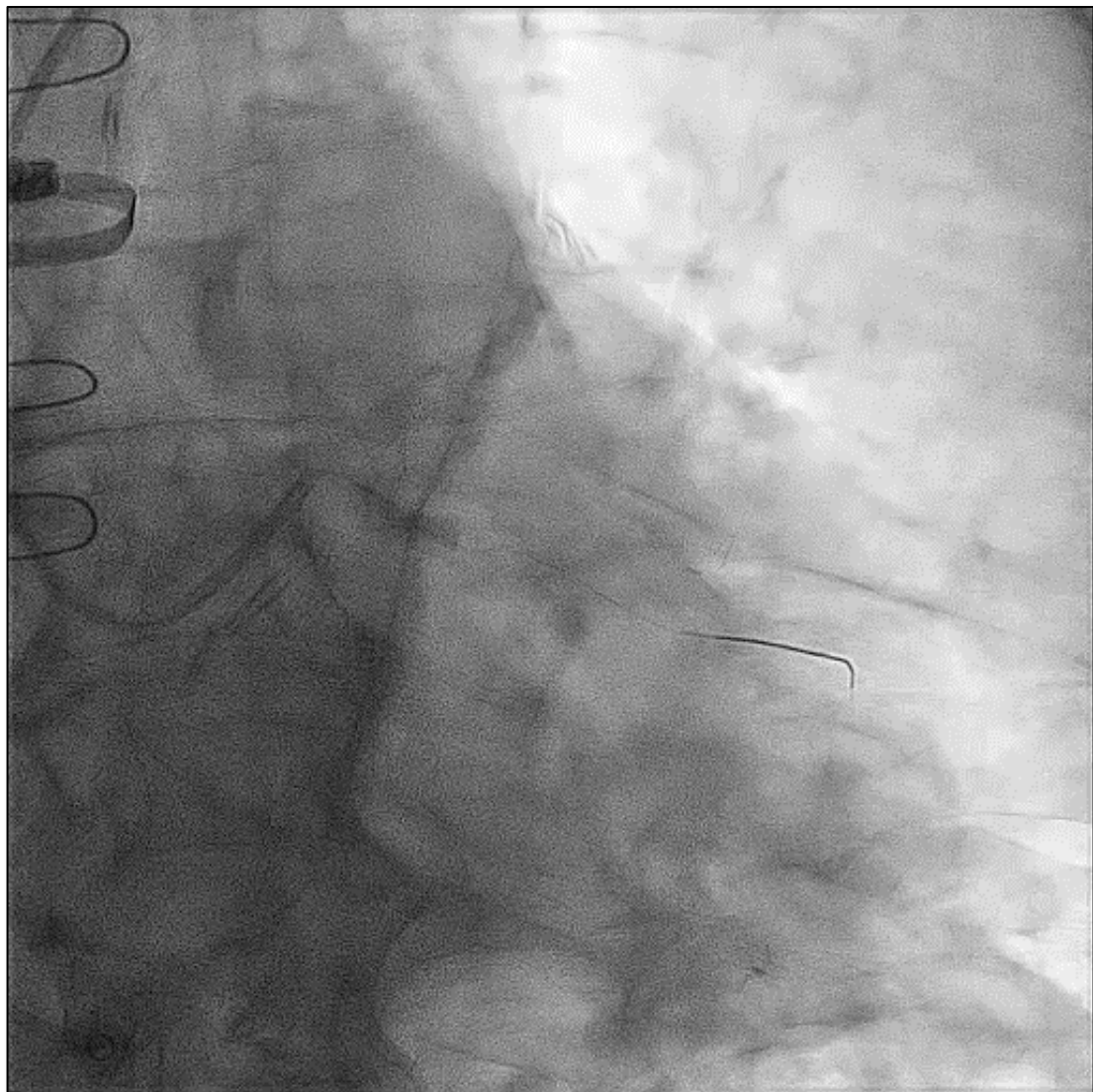
INDEX HOSPITALIZATION

- Revascularization of LCX subocclusion providing OM

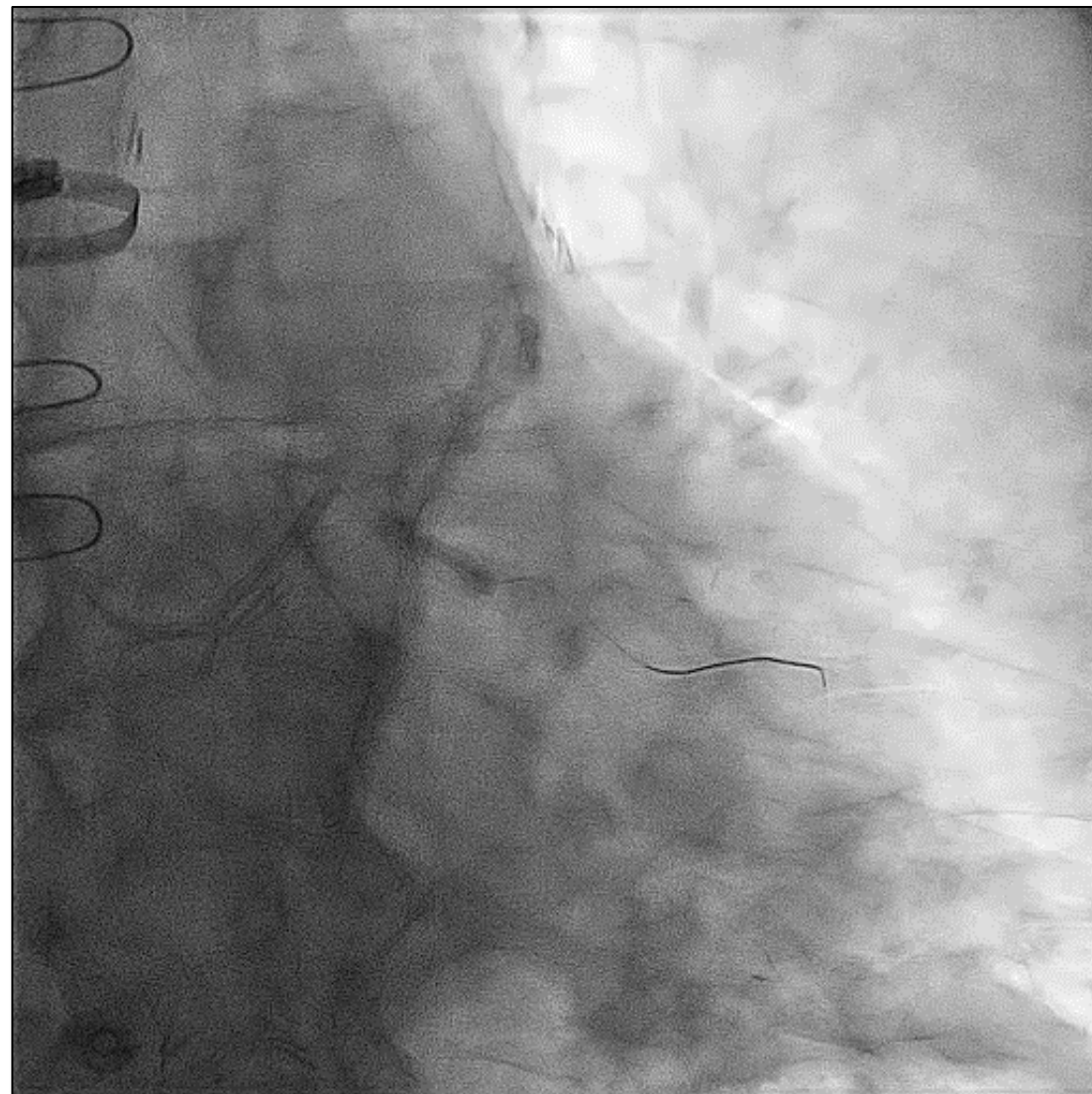
STAGED PCI

- Revascularization of Gastroepiploic artery graft providing PDA of RCA

INDEX HOSPITALIZATION: LCX PCI

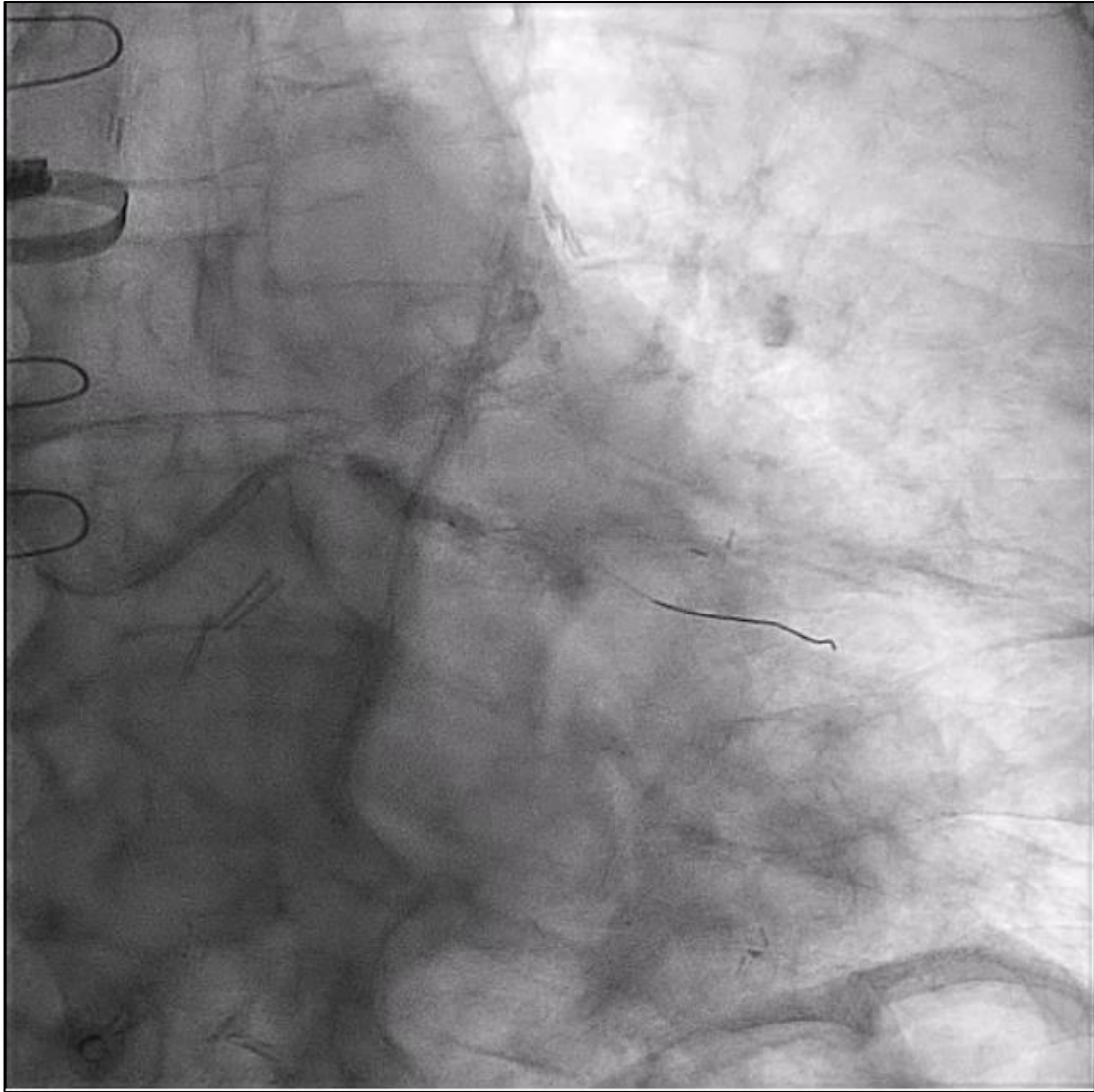


SC 2.0

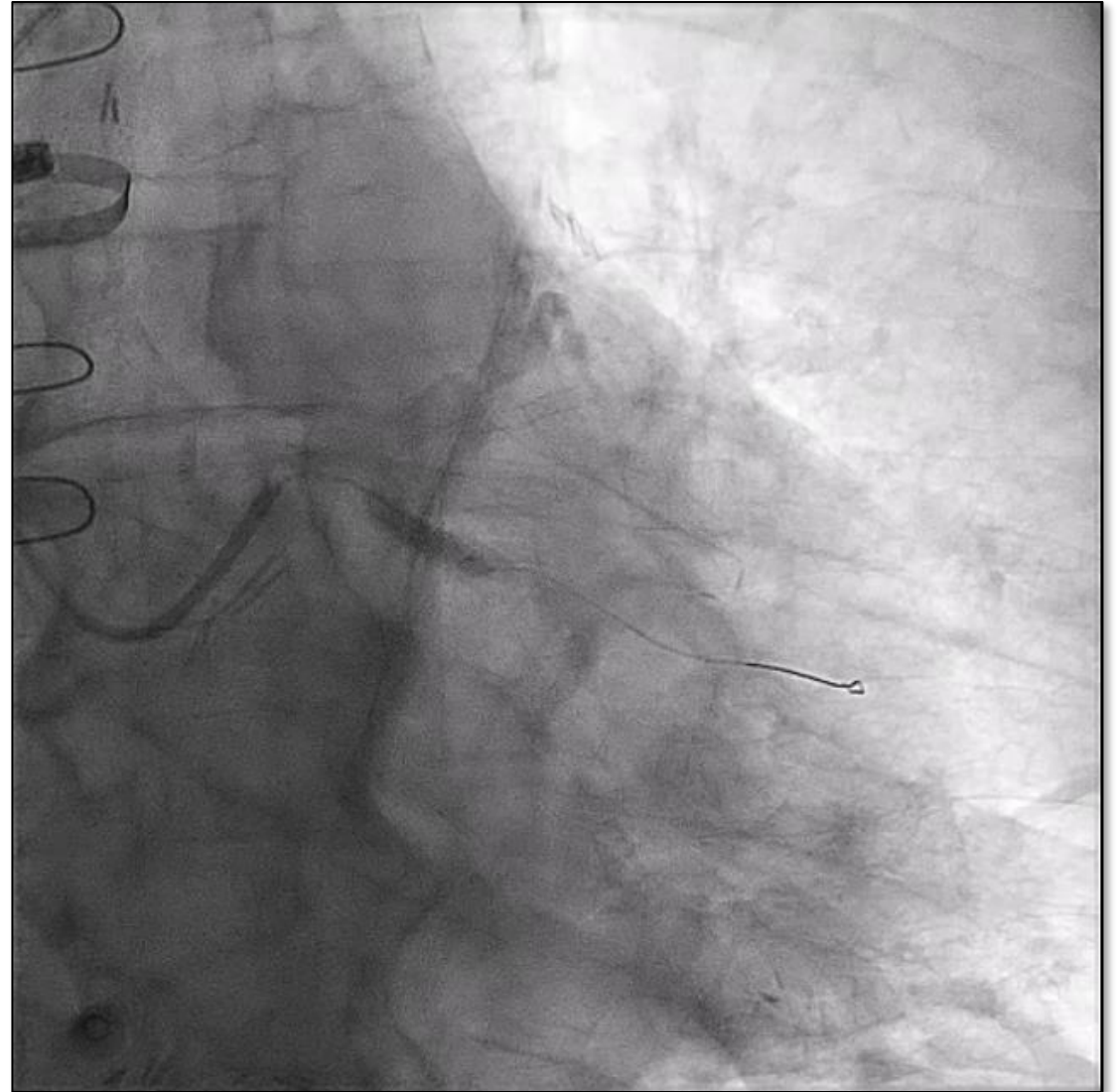


NC 3.5

INDEX HOSPITALIZATION: LCX PCI

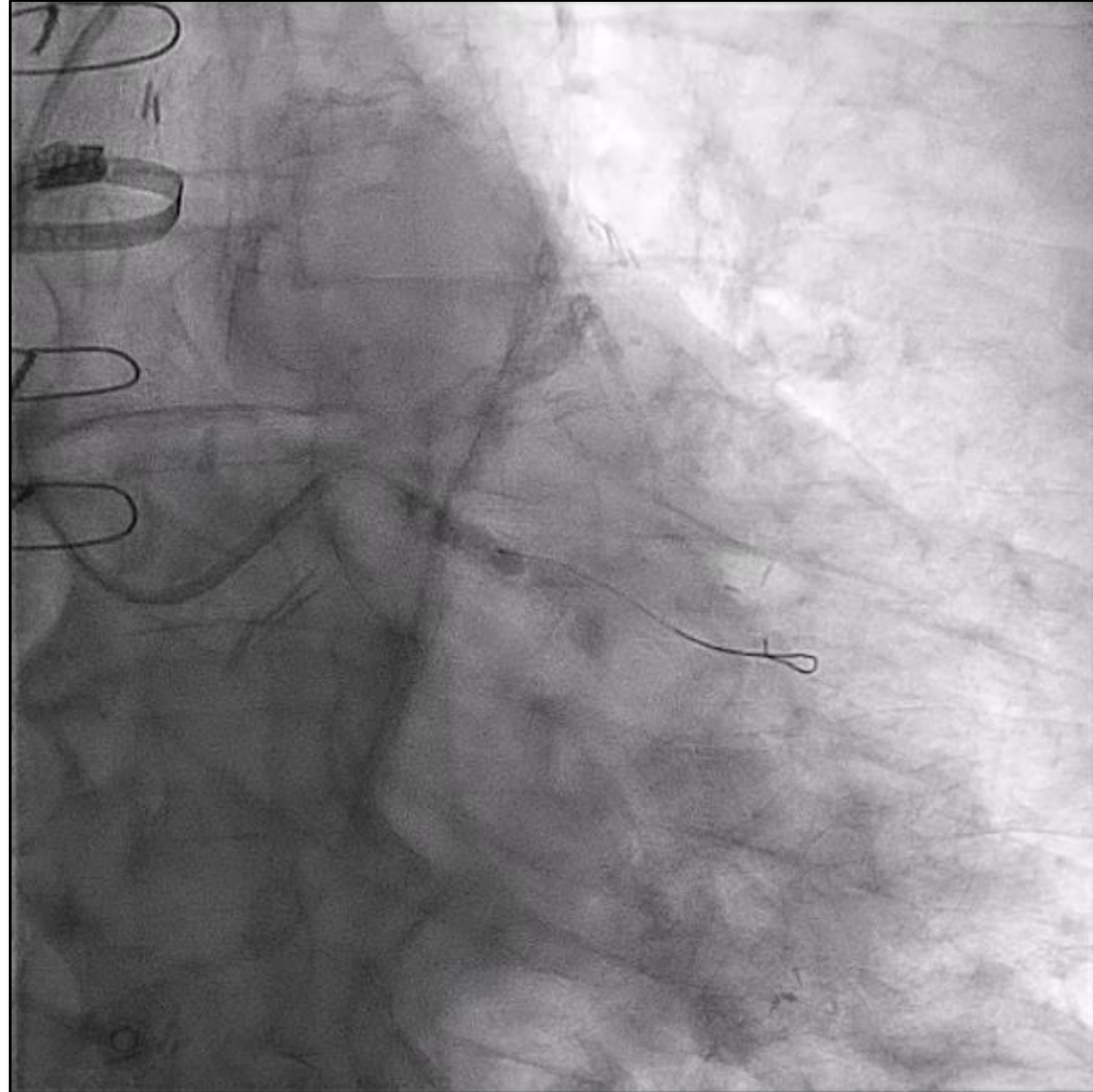


Cutting 4.0



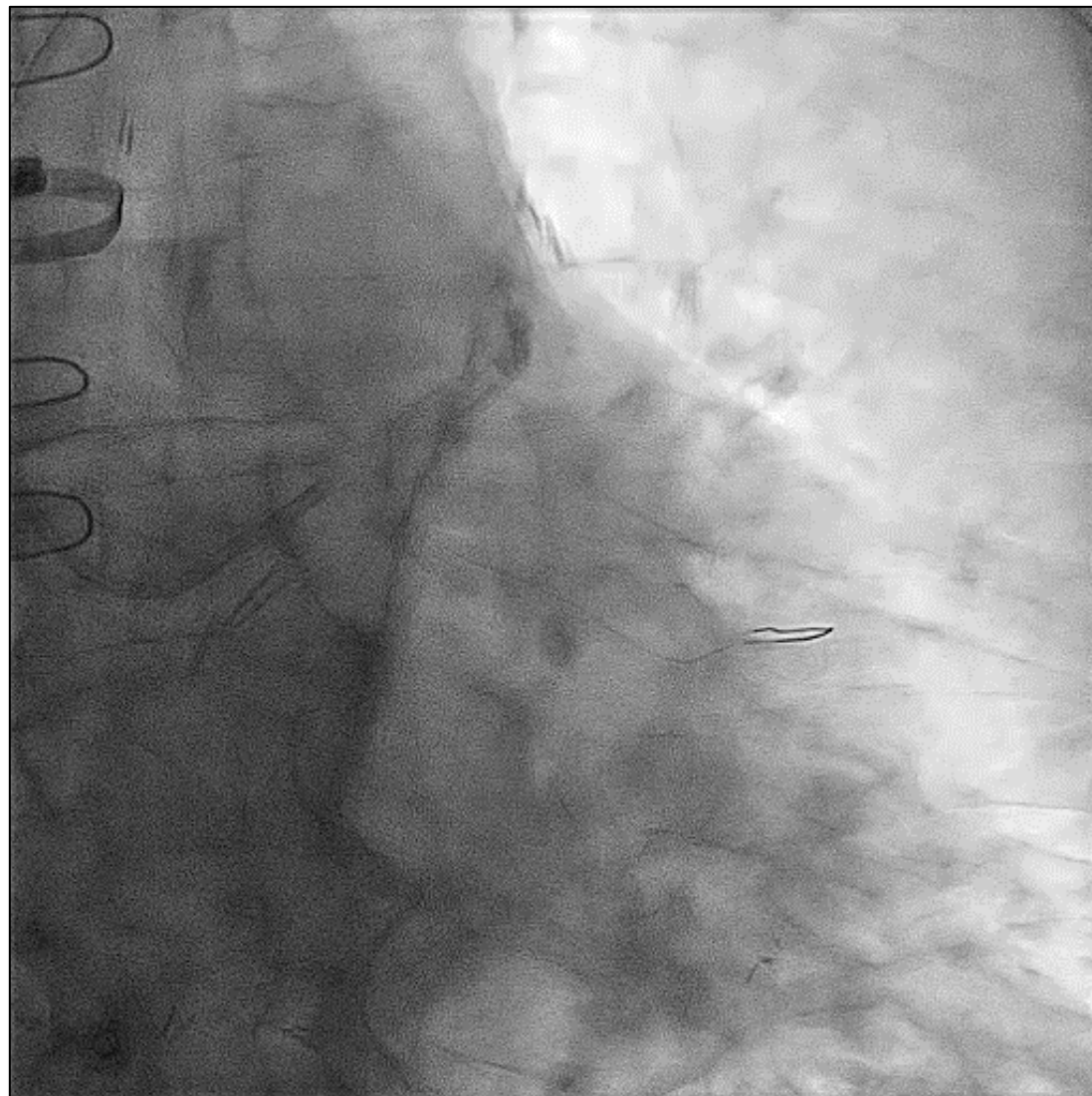
Shockwave 4.0

INDEX HOSPITALIZATION: LCX PCI

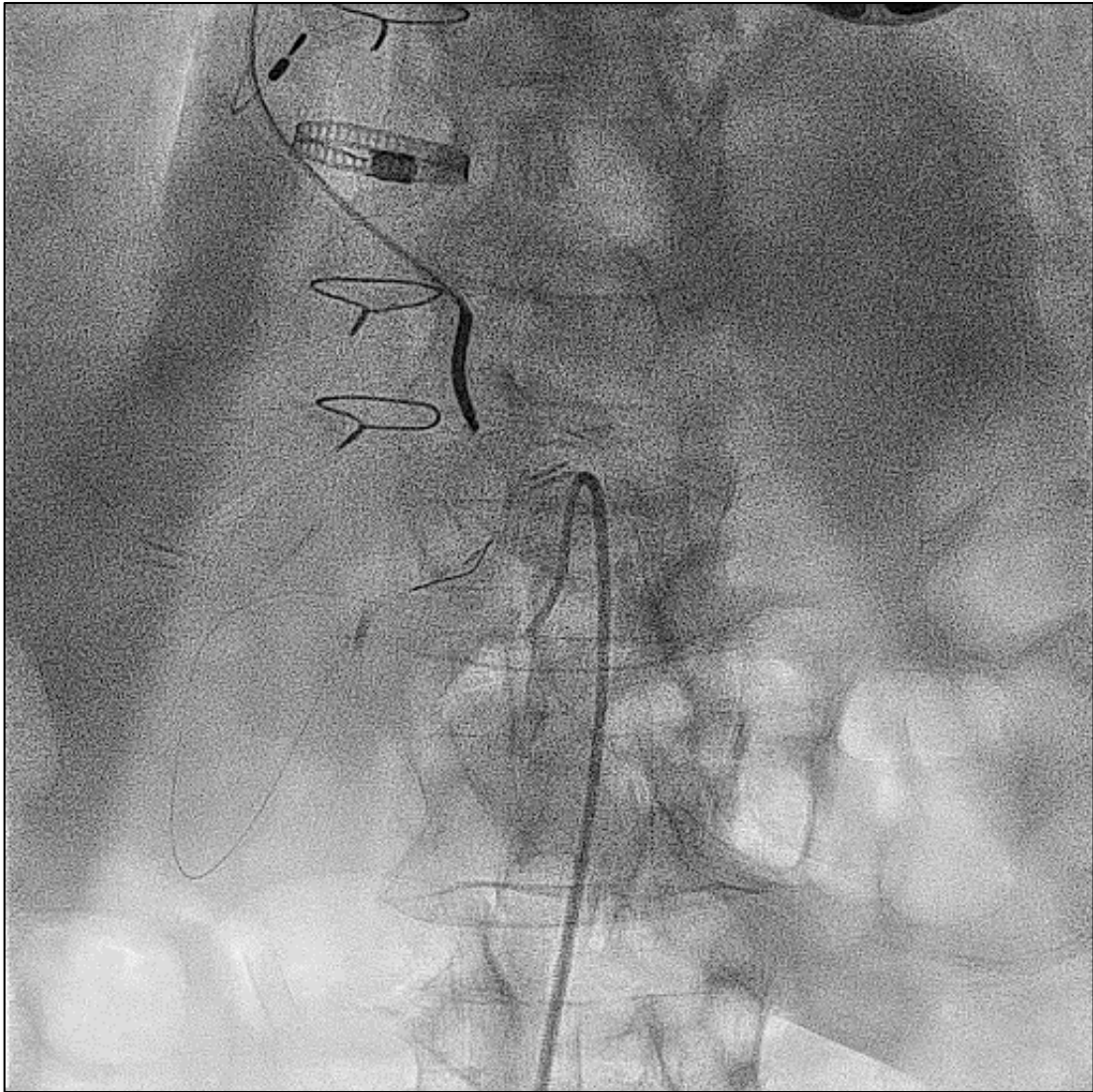


DEB 4.0

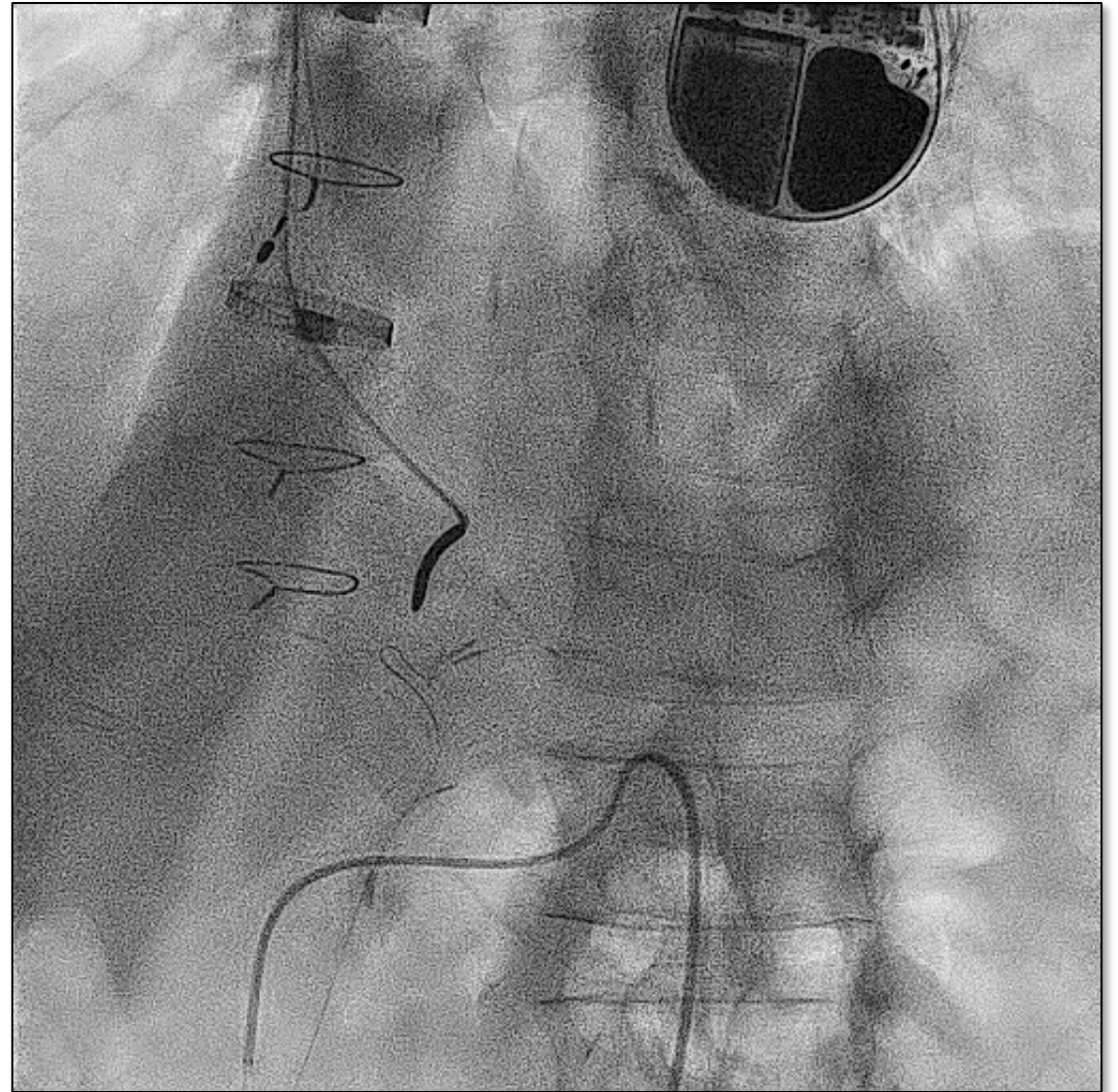
INDEX HOSPITALIZATION: final result



STAGED GEA PCI: Obtaining the selective opacification...

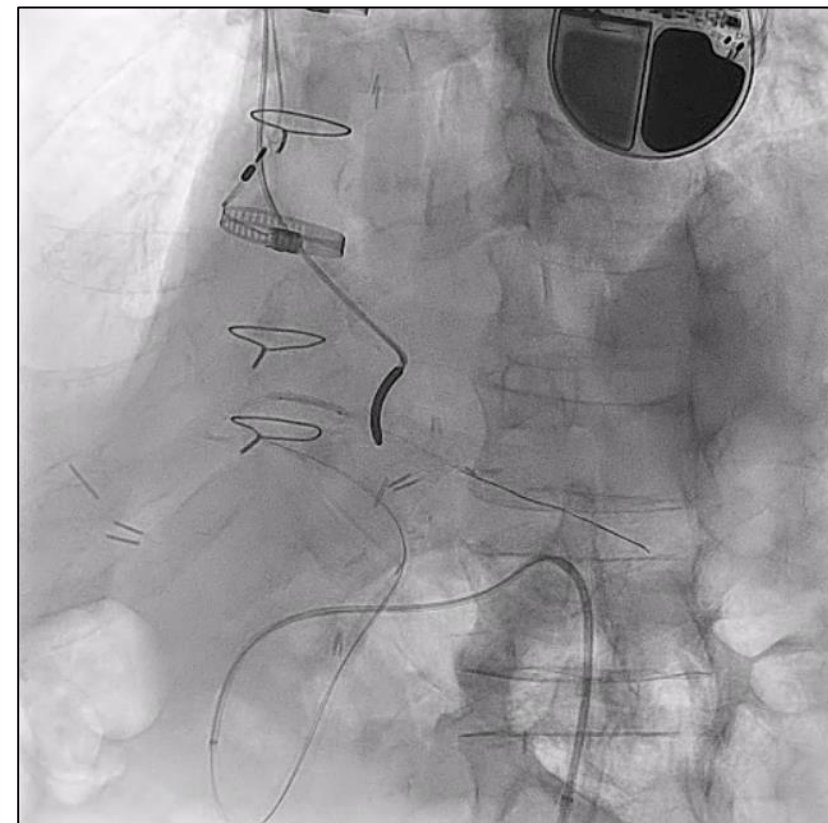
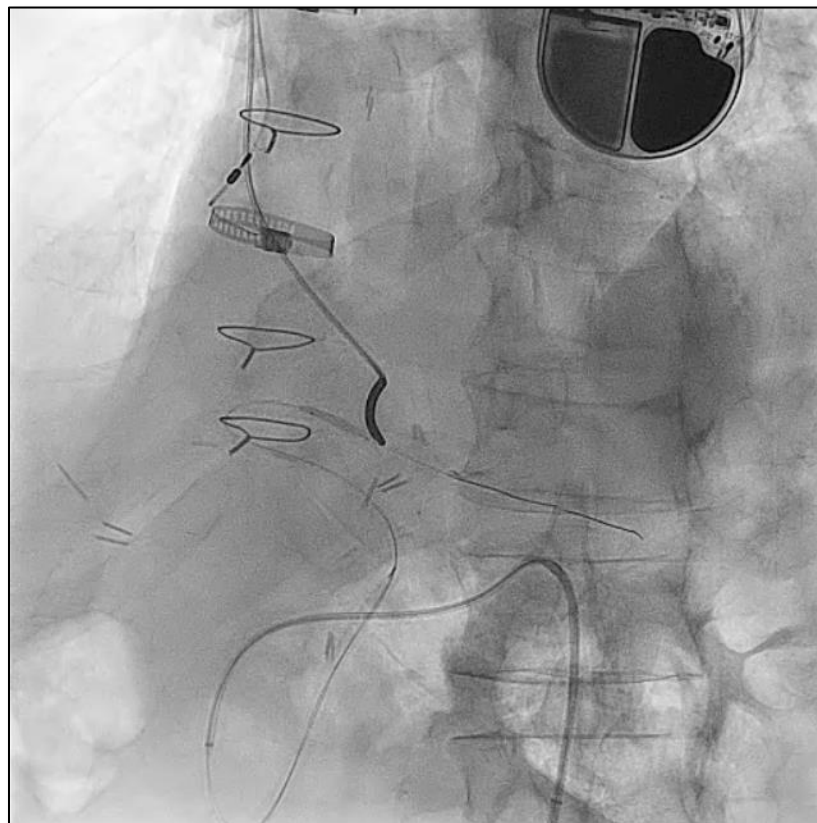
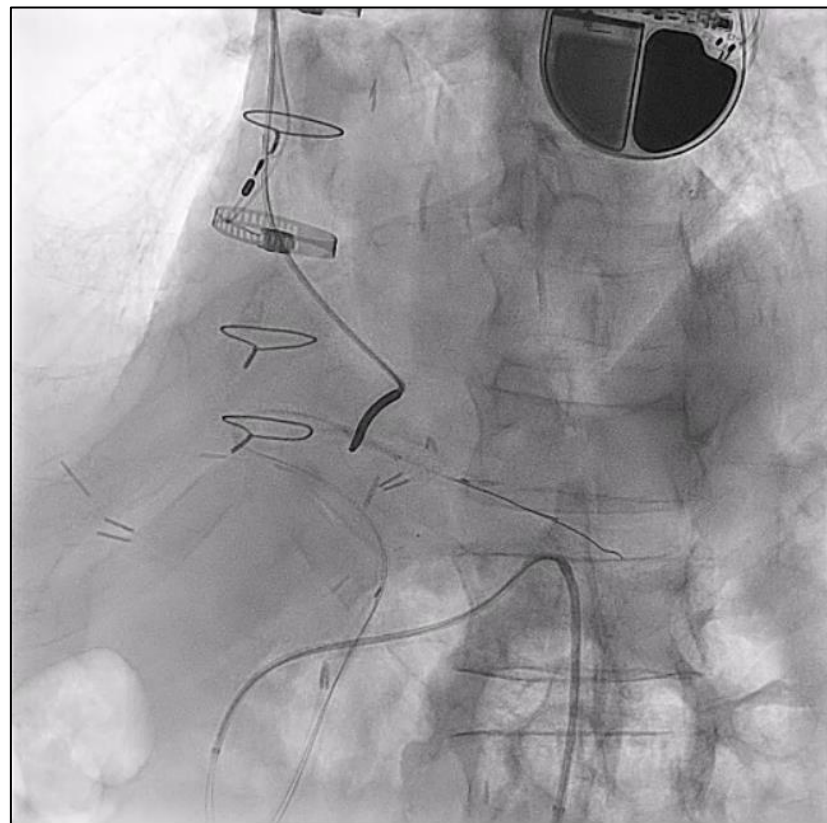


6-Fr JR 4.0/90 cm and 6-Fr Guidezilla *long*



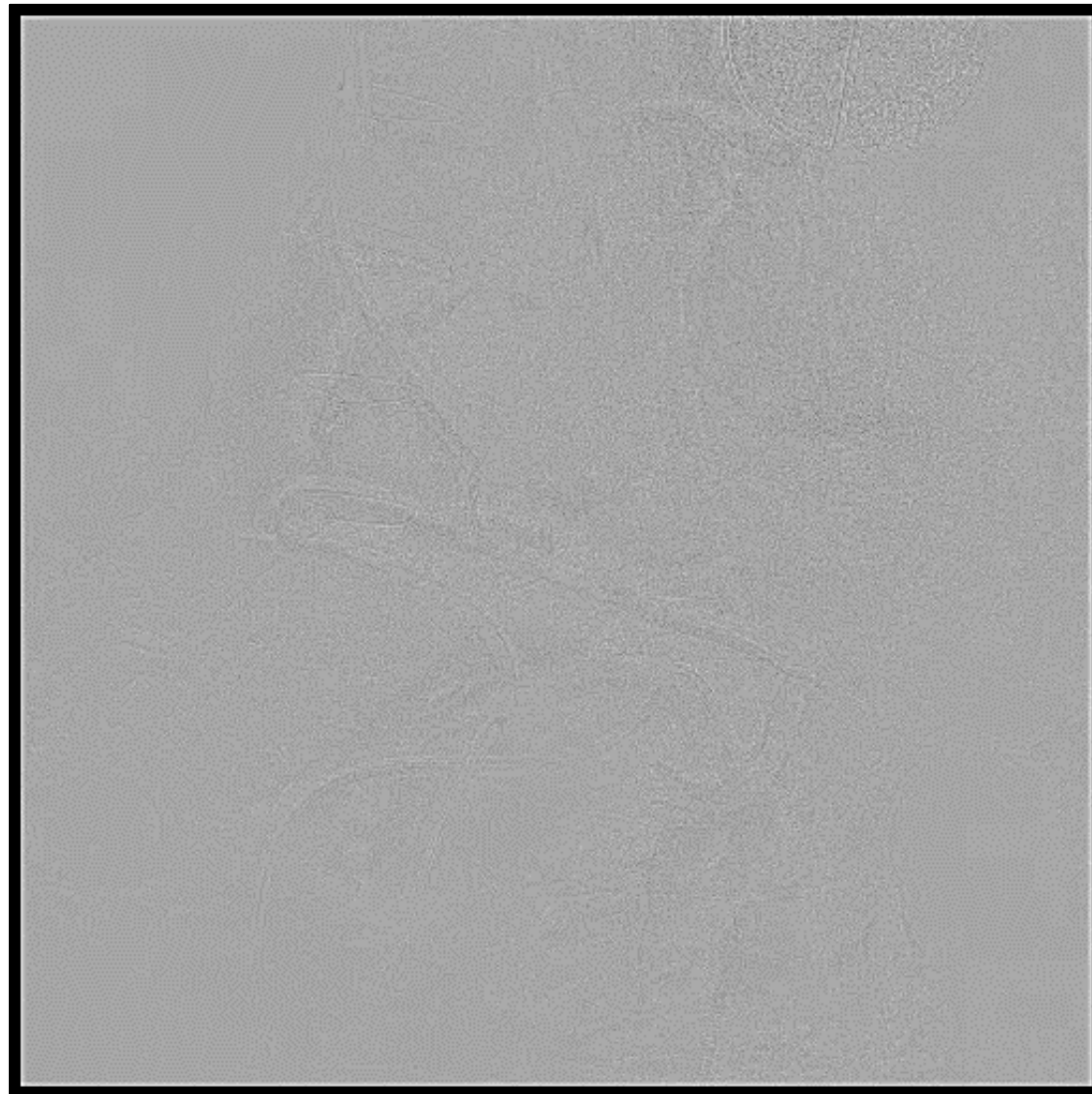
Advancing Guidezilla long in the middle graft

STAGED GEA PCI: preparing the lesion...

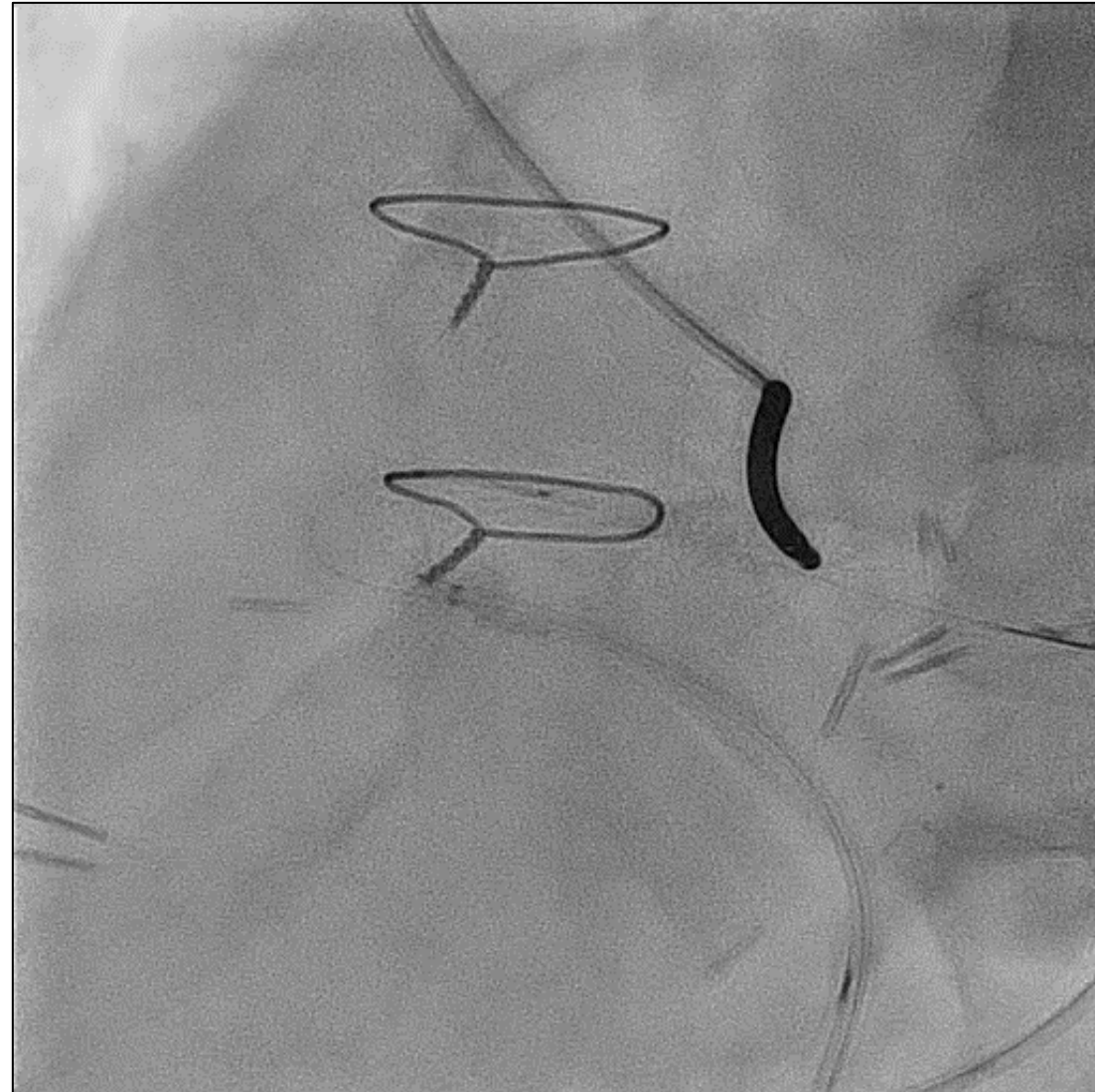


Semi-compliant balloon 2.0/15 mm

STAGED GEA PCI: first check...

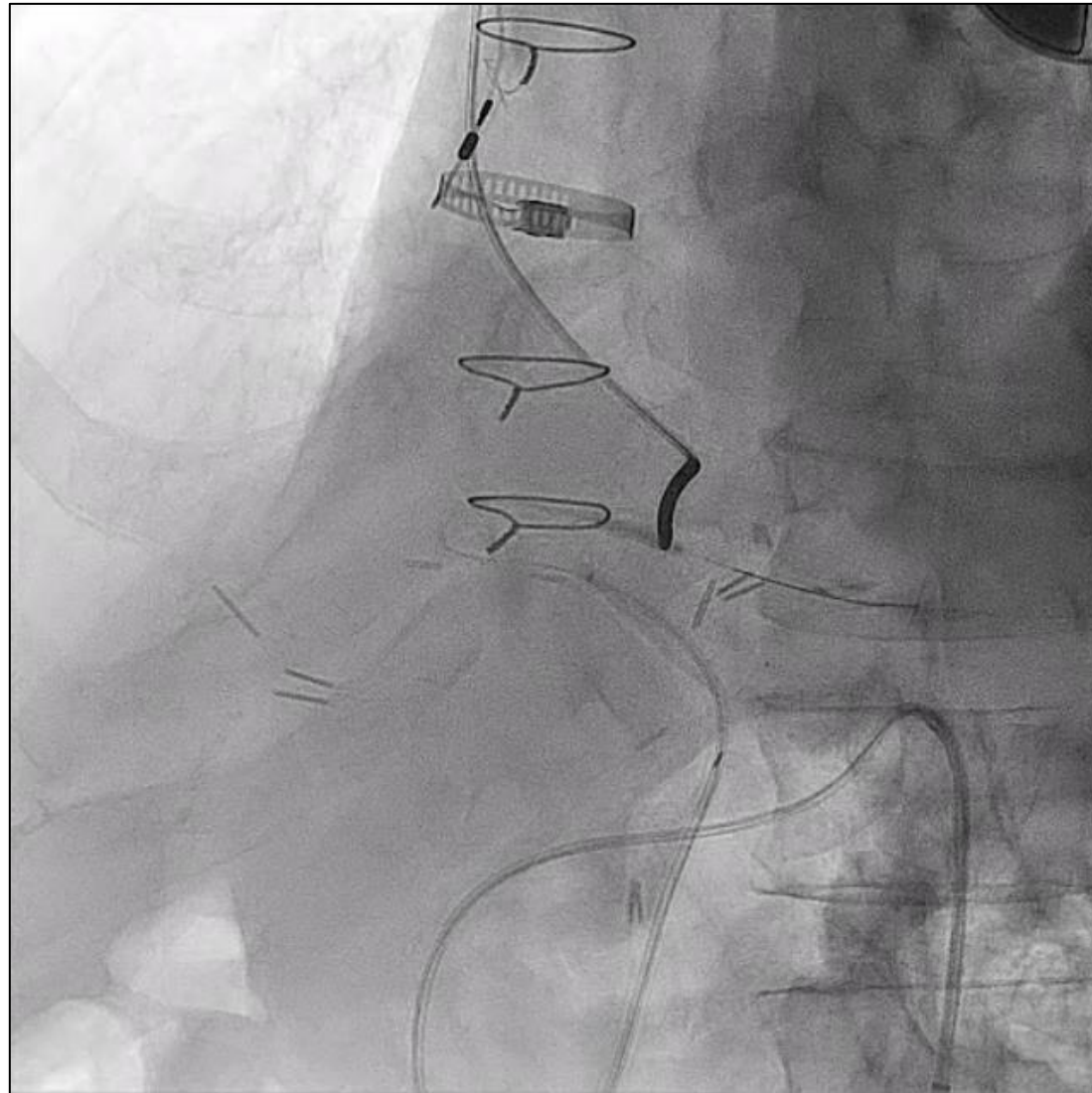


STAGED GEA PCI: overlap stenting...



Synergy 2.25/20 mm and Synergy 2.5/08 mm

STAGED GEA PCI: postdilatation



NC balloon 2.5/12 mm

STAGED GEA PCI: final check...

